

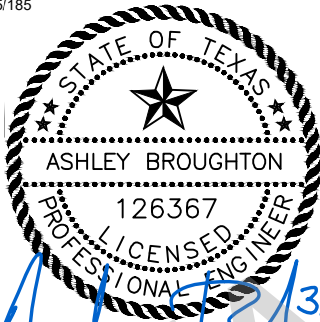
BID TABULATION FOR:

CONSTRUCTION OF THE WASTEWATER TREATMENT PLANT - PHASE 1 (0.125 MGD)
TO SERVE MONTGOMERY COUNTY MUNICIPAL UTILITY DISTRICT NO.199
MONTGOMERY COUNTY MUNICIPAL UTILITY DISTRICT NO. 199
CITY OF HOUSTON E.T.J., MONTGOMERY COUNTY, TEXAS
MARCH 8, 2023
LJA ENGINEERING, INC.
D. FORREST
MARCH 8, 2023
1931-4141 (9.2)

BID OPENING DATE:
BID OPENING LOCATION:
TABULATION BY:
TABULATION DATE:
LJA JOB NO.

BIDDER'S NAME	TOTAL AMOUNT BID
1) PIONEER CONSTRUCTION SERVICES, LLC	\$584,268.00
2) GILLELAND SMITH CONSTRUCTION, INC.	\$639,686.00
3) B-5 CONSTRUCTION CO. INC.	\$645,590.00
4) PRINCIPAL PLANT SERVICES, LTD.	\$682,038.00
5) PELTIER BROTHERS CONSTRUCTION	\$718,578.00

CALENDAR DAYS - 165/185



I, Ashley Broughton, P.E., hereby certify these bid tabulations to be true and correct.

BID TABULATION FOR:

BID OPENING DATE:
BID OPENING LOCATION:
TABULATION BY:
TABULATION DATE:
LJA JOB NO.

CONSTRUCTION OF THE WASTEWATER TREATMENT PLANT - PHASE 1 (0.125 MGD)
 TO SERVE MONTGOMERY COUNTY MUNICIPAL UTILITY DISTRICT NO.199
 MONTGOMERY COUNTY MUNICIPAL UTILITY DISTRICT NO. 199
 CITY OF HOUSTON E.T.J., MONTGOMERY COUNTY, TEXAS
 MARCH 8, 2023
 LJA ENGINEERING, INC.
 D. FORREST
 MARCH 8, 2023
 1931-4141 (9.2)

ITEM	DESCRIPTION	UNIT	QTY	1) PIONEER CONSTRUCTION SERVICES, LLC		2) GILLELAND SMITH CONSTRUCTION, INC.		3) B-5 CONSTRUCTION CO. INC.	
				UNIT COST	TOTAL COST	UNIT COST	TOTAL COST	UNIT COST	TOTAL COST
BASE BID ITEMS									
1	SITE WORK INCLUDING BUT NOT LIMITED TO SITE GRADING AND HYDROMULCH SEEDING, DRAINAGE, CONCRETE SIDEWALK, EQUIPMENT SLABS AND ALL REQUIRED APPURTENANCES, AS SHOWN ON PLANS, COMPLETE IN PLACE	LS	1	\$65,000.00	\$65,000.00	\$50,000.00	\$50,000.00	\$150,888.00	\$150,888.00
2	COORDINATION WITH EQUIPMENT PROVIDERS FOR INSTALLATION OF LEASED EQUIPMENT AND ALL ITEMS NOT PROVIDED BY EQUIPMENT PROVIDERS AS DESCRIBED IN EQUIPMENT PROVIDERS SCOPE OF SERVICES AND NOT COVERED IN SEPARATE BID ITEM (SEE EXHIBIT A, INCLUDED AFTER BID FORM) FOR A COMPLETE AND OPERATIONAL WWTP, COMPLETE IN PLACE	LS	1	\$20,000.00	\$20,000.00	\$50,000.00	\$50,000.00	\$13,560.00	\$13,560.00
3	CRUSHED CONCRETE FOUNDATION FOR TREATMENT UNITS AND EQUIPMENT, AS SHOWN ON PLANS, COMPLETE IN PLACE	LS	1	\$150,000.00	\$150,000.00	\$197,000.00	\$197,000.00	\$74,523.00	\$74,523.00
4	DRILLED SHAFT FOUNDATIONS FOR BLOWER PLATFORM, AS SHOWN ON PLANS, COMPLETE IN PLACE	LS	1	\$30,000.00	\$30,000.00	\$25,000.00	\$25,000.00	\$29,134.00	\$29,134.00
5	CONCRETE DUMPSTER PAD AND SUMP PUMP, INCLUDING 2" SCH. 40 PVC DRAIN LINE TO HEADWORKS, COMPLETE IN PLACE	LS	1	\$10,000.00	\$10,000.00	\$8,000.00	\$8,000.00	\$26,556.00	\$26,556.00
6	8" PIPE BOLLARD, COMPLETE IN PLACE	EA	4	\$800.00	\$3,200.00	\$500.00	\$2,000.00	\$2,521.50	\$10,086.00
7	8" FORCE MAIN, AWWA C900, DR-18, INCLUDING DUCTILE IRON PIPE FOR FORCE MAIN ABOVE GROUND, FITTINGS, EXCAVATION, BEDDING, BACKFILL, CONNECTION TO HEADWORKS, AND ALL APPURTENANCES, COMPLETE IN PLACE	LF	50	\$350.00	\$17,500.00	\$200.00	\$10,000.00	\$508.22	\$25,411.00
8	12" DUCTILE IRON PIPE OUTFALL, ALL DEPTHS, INCLUDING EXCAVATION, BEDDING, AND BACKFILL, COMPLETE IN PLACE	LF	18	\$750.00	\$13,500.00	\$1,000.00	\$18,000.00	\$1,035.50	\$18,639.00
9	TRENCH SAFETY SYSTEM, ALL DEPTHS, COMPLETE IN PLACE	LF	68	\$1.00	\$68.00	\$2.00	\$136.00	\$22.00	\$1,496.00
10	CONNECT PROPOSED FORCE MAIN TO PROPOSED FORCE MAIN (BY OTHERS), INCLUDE ALL NECESSARY APPURTENANCES, ADAPTORS AND CONNECTORS, OR STUB OUT AND PLUG, COMPLETE IN PLACE	LS	1	\$500.00	\$500.00	\$1,000.00	\$1,000.00	\$1,865.00	\$1,865.00
11	CONNECT PROPOSED OUTFALL PIPE TO EXIST INLET, INCLUDE ALL NECESSARY APPURTENANCES, ADAPTORS AND CONNECTORS, OR STUB OUT AND PLUG, COMPLETE IN PLACE	LS	1	\$500.00	\$500.00	\$1,000.00	\$1,000.00	\$4,520.00	\$4,520.00
12	INSTALLATION OF LEASED EQUIPMENT, INCLUDING ALL APPURTENANCES AS DESCRIBED IN EQUIPMENT PROVIDERS SCOPE OF SERVICES, COMPLETE IN PLACE	LS	1	\$85,000.00	\$85,000.00	\$85,000.00	\$85,000.00	\$85,000.00	\$85,000.00
BASE BID ITEMS SUBTOTAL:					\$395,268.00		\$447,136.00		\$441,678.00
ELECTRICAL ITEMS									
1	CONDUIT, CABLE AND DUCT BANK TO NEW NPW PANEL COMPLETE IN PLACE	LS	1	\$26,000.00	\$26,000.00	\$27,500.00	\$27,500.00	\$10,734.00	\$10,734.00
2	CONDUIT, CABLE AND DUCT BANK TO NEW CLARIFIER PANEL COMPLETE IN PLAC	LS	1	\$26,000.00	\$26,000.00	\$27,500.00	\$27,500.00	\$15,028.00	\$15,028.00
3	CONDUIT, CABLE AND DUCT BANK TO NEW BLOWER PANEL COMPLETE IN PLACE	LS	1	\$46,000.00	\$46,000.00	\$50,000.00	\$50,000.00	\$41,380.00	\$41,380.00
4	CONDUIT, CABLE, TRANSFORMER AND DISTRIBUTION PANEL FOR 120/240V LOADS COMPLETE IN PLACE	LS	1	\$61,000.00	\$61,000.00	\$65,000.00	\$65,000.00	\$58,985.00	\$58,985.00
ELECTRICAL ITEMS SUBTOTAL:					\$159,000.00		\$170,000.00		\$126,127.00

BID TABULATION FOR:

BID OPENING DATE:
BID OPENING LOCATION:
TABULATION BY:
TABULATION DATE:
LJA JOB NO.

CONSTRUCTION OF THE WASTEWATER TREATMENT PLANT - PHASE 1 (0.125 MGD)
 TO SERVE MONTGOMERY COUNTY MUNICIPAL UTILITY DISTRICT NO.199
 MONTGOMERY COUNTY MUNICIPAL UTILITY DISTRICT NO. 199
 CITY OF HOUSTON E.T.J., MONTGOMERY COUNTY, TEXAS
 MARCH 8, 2023
 LJA ENGINEERING, INC.
 D. FORREST
 MARCH 8, 2023
 1931-4141 (9.2)

ITEM	DESCRIPTION	UNIT	QTY	1) PIONEER CONSTRUCTION SERVICES, LLC		2) GILLELAND SMITH CONSTRUCTION, INC.		3) B-5 CONSTRUCTION CO. INC.	
				UNIT COST	TOTAL COST	UNIT COST	TOTAL COST	UNIT COST	TOTAL COST
MISCELLANEOUS ITEMS									
1	STORM WATER POLLUTION PREVENTION PLAN, INCLUDING ADMINISTRATION, INSTALLATION, MAINTENANCE, AND REMOVAL AS REQUIRED BY THE PLANS AND AS DIRECTED BY THE ENGINEER, TO BE MAINTAINED UNTIL CONTRACTOR NOTICE OF TERMINATION IS SUBMITTED, COMPLETE IN PLACE	LS	1	\$500.00	\$500.00	\$500.00	\$500.00	\$5,820.00	\$5,820.00
2	INLET PROTECTION BARRIER, (TO BE USED ONLY AS DIRECTED BY THE ENGINEER), COMPLETE IN PLACE	EA	1	\$250.00	\$250.00	\$50.00	\$50.00	\$250.00	\$250.00
3	FILTER FABRIC FENCE, (TO BE USED ONLY AS DIRECTED BY THE ENGINEER), COMPLETE IN PLACE	LF	1000	\$1.00	\$1,000.00	\$1.00	\$1,000.00	\$4.00	\$4,000.00
4	INSTALLATION, MAINTAINANCE & REMOVAL OF STABILIZED CONSTRUCTION EXIT, (TO BE USED ONLY AS DIRECTED BY THE ENGINEER), COMPLETE IN PLACE	EA	1	\$1,500.00	\$1,500.00	\$1,000.00	\$1,000.00	\$3,500.00	\$3,500.00
5	INSTALLATION, MAINTAINANCE & REMOVAL OF CONCRETE TRUCK WASHOUT, (TO BE USED ONLY AS DIRECTED BY THE ENGINEER), COMPLETE IN PLACE	EA	1	\$250.00	\$250.00	\$500.00	\$500.00	\$1,350.00	\$1,350.00
6	CONTROL OF GROUNDWATER AND SURFACE WATER AS NEEDED FOR CONSTRUCTION, COMPLETE IN PLACE	LS	1	\$500.00	\$500.00	\$500.00	\$500.00	\$650.00	\$650.00
7	EXTRA CRUSHED CONCRETE FOR FOUNDATION (TO BE USED ONLY AS DIRECTED BY THE ENGINEER), COMPLETE IN PLACE	SY	50	\$30.00	\$1,500.00	\$100.00	\$5,000.00	\$110.30	\$5,515.00
8	EXTRA CEMENT STABILIZED SAND (TO BE USED ONLY AS DIRECTED BY THE ENGINEER), COMPLETE IN PLACE	CY	50	\$20.00	\$1,000.00	\$40.00	\$2,000.00	\$48.00	\$2,400.00
9	EXTRA HYDROMULCH SEEDING, (TO BE USED ONLY AS DIRECTED BY THE ENGINEER), COMPLETE IN PLACE	AC	1	\$2,500.00	\$2,500.00	\$1,000.00	\$1,000.00	\$1,800.00	\$1,800.00
10	EXTRA 4000 PSI CONCRETE WITH REINFORCING STEEL, (TO BE USED ONLY AS DIRECTED BY THE ENGINEER), COMPLETE IN PLACE	CY	50	\$400.00	\$20,000.00	\$200.00	\$10,000.00	\$650.00	\$32,500.00
11	PROVIDE WATER TO PERFORM CLEAR WATER TEST OF TREATMENT UNITS (TO BE USED ONLY AS DIRECTED BY THE ENGINEER), COMPLETE IN PLACE	LS	1	\$1,000.00	\$1,000.00	\$1,000.00	\$1,000.00	\$20,000.00	\$20,000.00
MISCELLANEOUS ITEMS SUBTOTAL:					\$30,000.00		\$22,550.00		\$77,785.00
<u>BIDDING SUMMARY</u>									
SUBTOTAL BASE BID ITEMS					\$395,268.00		\$447,136.00		\$441,678.00
SUBTOTAL ELECTRICAL ITEMS					\$159,000.00		\$170,000.00		\$126,127.00
SUBTOTAL MISCELLANEOUS ITEMS					\$30,000.00		\$22,550.00		\$77,785.00
TOTAL AMOUNT BASE BID					\$584,268.00		\$639,686.00		\$645,590.00

BID TABULATION FOR:

CONSTRUCTION OF THE WASTEWATER TREATMENT PLANT - PHASE 1 (0.125 MGD)
 TO SERVE MONTGOMERY COUNTY MUNICIPAL UTILITY DISTRICT NO.199
 MONTGOMERY COUNTY MUNICIPAL UTILITY DISTRICT NO. 199
 CITY OF HOUSTON E.T.J., MONTGOMERY COUNTY, TEXAS
 MARCH 8, 2023
 LJA ENGINEERING, INC.
 D. FORREST
 MARCH 8, 2023
 1931-4141 (9.2)

BID OPENING DATE:
BID OPENING LOCATION:
TABULATION BY:
TABULATION DATE:
LJA JOB NO.

4) PRINCIPAL PLANT SERVICES, LTD. 5) PELTIER BROTHERS CONSTRUCTION

ITEM	DESCRIPTION	UNIT	QTY	UNIT COST	TOTAL COST	UNIT COST	TOTAL COST
BASE BID ITEMS							
1	SITE WORK INCLUDING BUT NOT LIMITED TO SITE GRADING AND HYDROMULCH SEEDING, DRAINAGE, CONCRETE SIDEWALK, EQUIPMENT SLABS AND ALL REQUIRED APPURTENANCES, AS SHOWN ON PLANS, COMPLETE IN PLACE	LS	1	\$39,290.00	\$39,290.00	\$98,685.00	\$98,685.00
2	COORDINATION WITH EQUIPMENT PROVIDERS FOR INSTALLATION OF LEASED EQUIPMENT AND ALL ITEMS NOT PROVIDED BY EQUIPMENT PROVIDERS AS DESCRIBED IN EQUIPMENT PROVIDERS SCOPE OF SERVICES AND NOT COVERED IN SEPARATE BID ITEM (SEE EXHIBIT A, INCLUDED AFTER BID FORM) FOR A COMPLETE AND OPERATIONAL WWTP, COMPLETE IN PLACE	LS	1	\$74,813.00	\$74,813.00	\$182,690.00	\$182,690.00
3	CRUSHED CONCRETE FOUNDATION FOR TREATMENT UNITS AND EQUIPMENT, AS SHOWN ON PLANS, COMPLETE IN PLACE	LS	1	\$147,407.00	\$147,407.00	\$120,515.00	\$120,515.00
4	DRILLED SHAFT FOUNDATIONS FOR BLOWER PLATFORM, AS SHOWN ON PLANS, COMPLETE IN PLACE	LS	1	\$32,182.00	\$32,182.00	\$7,200.00	\$7,200.00
5	CONCRETE DUMPSTER PAD AND SUMP PUMP, INCLUDING 2" SCH. 40 PVC DRAIN LINE TO HEADWORKS, COMPLETE IN PLACE	LS	1	\$12,055.00	\$12,055.00	\$1,800.00	\$1,800.00
6	8" PIPE BOLLARD, COMPLETE IN PLACE	EA	4	\$1,098.00	\$4,392.00	\$617.00	\$2,468.00
7	8" FORCE MAIN, AWWA C900, DR-18, INCLUDING DUCTILE IRON PIPE FOR FORCE MAIN ABOVE GROUND, FITTINGS, EXCAVATION, BEDDING, BACKFILL, CONNECTION TO HEADWORKS, AND ALL APPURTENANCES, COMPLETE IN PLACE	LF	50	\$333.00	\$16,650.00	\$320.00	\$16,000.00
8	12" DUCTILE IRON PIPE OUTFALL, ALL DEPTHS, INCLUDING EXCAVATION, BEDDING, AND BACKFILL, COMPLETE IN PLACE	LF	18	\$1,090.00	\$19,620.00	\$744.00	\$13,392.00
9	TRENCH SAFETY SYSTEM, ALL DEPTHS, COMPLETE IN PLACE	LF	68	\$1.00	\$68.00	\$6.00	\$408.00
10	CONNECT PROPOSED FORCE MAIN TO PROPOSED FORCE MAIN (BY OTHERS), INCLUDE ALL NECESSARY APPURTENANCES, ADAPTORS AND CONNECTORS, OR STUB OUT AND PLUG, COMPLETE IN PLACE	LS	1	\$665.00	\$665.00	\$1,397.00	\$1,397.00
11	CONNECT PROPOSED OUTFALL PIPE TO EXIST INLET, INCLUDE ALL NECESSARY APPURTENANCES, ADAPTORS AND CONNECTORS, OR STUB OUT AND PLUG, COMPLETE IN PLACE	LS	1	\$665.00	\$665.00	\$1,463.00	\$1,463.00
12	INSTALLATION OF LEASED EQUIPMENT, INCLUDING ALL APPURTENANCES AS DESCRIBED IN EQUIPMENT PROVIDERS SCOPE OF SERVICES, COMPLETE IN PLACE	LS	1	\$85,000.00	\$85,000.00	\$85,000.00	\$85,000.00
BASE BID ITEMS SUBTOTAL:					\$432,807.00		\$531,018.00
ELECTRICAL ITEMS							
1	CONDUIT, CABLE AND DUCT BANK TO NEW NPW PANEL COMPLETE IN PLACE	LS	1	\$33,250.00	\$33,250.00	\$5,500.00	\$5,500.00
2	CONDUIT, CABLE AND DUCT BANK TO NEW CLARIFIER PANEL COMPLETE IN PLAC	LS	1	\$33,250.00	\$33,250.00	\$27,500.00	\$27,500.00
3	CONDUIT, CABLE AND DUCT BANK TO NEW BLOWER PANEL COMPLETE IN PLACE	LS	1	\$59,850.00	\$59,850.00	\$49,500.00	\$49,500.00
4	CONDUIT, CABLE, TRANSFORMER AND DISTRIBUTION PANEL FOR 120/240V LOADS COMPLETE IN PLACE	LS	1	\$79,800.00	\$79,800.00	\$66,000.00	\$66,000.00
ELECTRICAL ITEMS SUBTOTAL:					\$206,150.00		\$148,500.00

BID TABULATION FOR:

CONSTRUCTION OF THE WASTEWATER TREATMENT PLANT - PHASE 1 (0.125 MGD)
 TO SERVE MONTGOMERY COUNTY MUNICIPAL UTILITY DISTRICT NO.199
 MONTGOMERY COUNTY MUNICIPAL UTILITY DISTRICT NO. 199
 CITY OF HOUSTON E.T.J., MONTGOMERY COUNTY, TEXAS
 MARCH 8, 2023
 LJA ENGINEERING, INC.
 D. FORREST
 MARCH 8, 2023
 1931-4141 (9.2)

BID OPENING DATE:
BID OPENING LOCATION:
TABULATION BY:
TABULATION DATE:
LJA JOB NO.

4) PRINCIPAL PLANT SERVICES, LTD. 5) PELTIER BROTHERS CONSTRUCTION

ITEM	DESCRIPTION	UNIT	QTY	UNIT COST	TOTAL COST	UNIT COST	TOTAL COST
MISCELLANEOUS ITEMS							
1	STORM WATER POLLUTION PREVENTION PLAN, INCLUDING ADMINISTRATION, INSTALLATION, MAINTENANCE, AND REMOVAL AS REQUIRED BY THE PLANS AND AS DIRECTED BY THE ENGINEER, TO BE MAINTAINED UNTIL CONTRACTOR NOTICE OF TERMINATION IS SUBMITTED, COMPLETE IN PLACE	LS	1	\$1,330.00	\$1,330.00	\$4,800.00	\$4,800.00
2	INLET PROTECTION BARRIER, (TO BE USED ONLY AS DIRECTED BY THE ENGINEER), COMPLETE IN PLACE	EA	1	\$50.00	\$50.00	\$180.00	\$180.00
3	FILTER FABRIC FENCE, (TO BE USED ONLY AS DIRECTED BY THE ENGINEER), COMPLETE IN PLACE	LF	1000	\$5.00	\$5,000.00	\$3.00	\$3,000.00
4	INSTALLATION, MAINTAINANCE & REMOVAL OF STABILIZED CONSTRUCTION EXIT, (TO BE USED ONLY AS DIRECTED BY THE ENGINEER), COMPLETE IN PLACE	EA	1	\$500.00	\$500.00	\$900.00	\$900.00
5	INSTALLATION, MAINTAINANCE & REMOVAL OF CONCRETE TRUCK WASHOUT, (TO BE USED ONLY AS DIRECTED BY THE ENGINEER), COMPLETE IN PLACE	EA	1	\$250.00	\$250.00	\$900.00	\$900.00
6	CONTROL OF GROUNDWATER AND SURFACE WATER AS NEEDED FOR CONSTRUCTION, COMPLETE IN PLACE	LS	1	\$1.00	\$1.00	\$1,200.00	\$1,200.00
7	EXTRA CRUSHED CONCRETE FOR FOUNDATION (TO BE USED ONLY AS DIRECTED BY THE ENGINEER), COMPLETE IN PLACE	SY	50	\$45.00	\$2,250.00	\$60.00	\$3,000.00
8	EXTRA CEMENT STABILIZED SAND (TO BE USED ONLY AS DIRECTED BY THE ENGINEER), COMPLETE IN PLACE	CY	50	\$25.00	\$1,250.00	\$48.00	\$2,400.00
9	EXTRA HYDROMULCH SEEDING, (TO BE USED ONLY AS DIRECTED BY THE ENGINEER), COMPLETE IN PLACE	AC	1	\$1,200.00	\$1,200.00	\$1,440.00	\$1,440.00
10	EXTRA 4000 PSI CONCRETE WITH REINFORCING STEEL, (TO BE USED ONLY AS DIRECTED BY THE ENGINEER), COMPLETE IN PLACE	CY	50	\$350.00	\$17,500.00	\$360.00	\$18,000.00
11	PROVIDE WATER TO PERFORM CLEAR WATER TEST OF TREATMENT UNITS (TO BE USED ONLY AS DIRECTED BY THE ENGINEER), COMPLETE IN PLACE	LS	1	\$13,750.00	\$13,750.00	\$3,240.00	\$3,240.00
MISCELLANEOUS ITEMS SUBTOTAL:					\$43,081.00		\$39,060.00
<u>BIDDING SUMMARY</u>							
SUBTOTAL BASE BID ITEMS					\$432,807.00		\$531,018.00
SUBTOTAL ELECTRICAL ITEMS					\$206,150.00		\$148,500.00
SUBTOTAL MISCELLANEOUS ITEMS					\$43,081.00		\$39,060.00
TOTAL AMOUNT BASE BID					\$682,038.00		\$718,578.00