

BID TABULATION FOR:

CONSTRUCTION OF THE WATER, SANITARY SEWER AND DRAINAGE FACILITIES  
TO SERVE MAGNOLIA RIDGE FOREST SECTION 15 AND SECTION 16  
MONTGOMERY COUNTY MUNICIPAL UTILITY DISTRICT NO. 108  
CITY OF MAGNOLIA, MONTGOMERY COUNTY, TEXAS  
DECEMBER 8, 2021  
LJA ENGINEERING, INC.  
D. FORREST  
DECEMBER 9, 2021  
2025-1415D (9.2)

BID OPENING DATE:  
BID OPENING LOCATION:  
TABULATION BY:  
TABULATION DATE:  
LJA JOB NO.

BIDDER'S NAME	TOTAL AMOUNT BID
1) BLAZEY CONSTRUCTION SERVICES LLC	\$1,477,424.97
2) CE BARKER, LTD	\$1,484,333.14
3) PRINCIPAL SERVICES, LTD	\$1,528,406.10
4) KENNETH LAMB CONSTRUCTION CO.,LTD.	\$1,581,472.75
5) CROSTEX CONSTRUCTION INC.	\$1,585,000.00
6) BAY UTILITIES. LLC	\$1,624,780.85
7) R CONSTRUCTION CIVIL	\$1,642,483.10

CALENDAR DAYS - 70/80



*[Handwritten Signature]*  
12-10-2021

I, David A. Rivera, P.E., hereby certify these bid tabulations to be true and correct.

LJA Engineering, Inc.

**BID TABULATION FOR:**

**BID OPENING DATE:**  
**BID OPENING LOCATION:**  
**TABULATION BY:**  
**TABULATION DATE:**  
**LJA JOB NO.**

CONSTRUCTION OF THE WATER, SANITARY SEWER AND DRAINAGE FACILITIES  
 TO SERVE MAGNOLIA RIDGE FOREST SECTION 15 AND SECTION 16  
 MONTGOMERY COUNTY MUNICIPAL UTILITY DISTRICT NO. 108  
 CITY OF MAGNOLIA, MONTGOMERY COUNTY, TEXAS  
 DECEMBER 8, 2021  
 LJA ENGINEERING, INC.  
 D. FORREST  
 DECEMBER 9, 2021  
 2025-1415D (9.2)

ITEM	DESCRIPTION	UNIT	QTY	1) BLAZEY CONSTRUCTION SERVICES LLC		2) CE BARKER, LTD		3) PRINCIPAL SERVICES, LTD	
				UNIT COST	TOTAL COST	UNIT COST	TOTAL COST	UNIT COST	TOTAL COST
<b>WATER ITEMS - SECTION 15</b>									
1	FULL CONSTRUCTION STAKING FOR SECTION 15 ITEMS, COORDINATE WITH GBI PARTNERS, L.P., JON BORDOVSKY, 281.499.4539, COMPLETE IN PLACE	LS	1	\$11,846.00	\$11,846.00	\$11,846.00	\$11,846.00	\$11,846.00	\$11,846.00
2	6" PVC WATER PIPE, C-900, DR 18, CL 235 ALL DEPTHS, TO INCLUDE FITTINGS, BEDDING AND BACKFILL, COMPLETE IN PLACE	LF	688	\$30.00	\$20,640.00	\$27.43	\$18,871.84	\$30.00	\$20,640.00
3	8" PVC WATER PIPE, C-900, DR 18, CL 235 ALL DEPTHS, TO INCLUDE FITTINGS, BEDDING AND BACKFILL, COMPLETE IN PLACE	LF	1885	\$42.00	\$79,170.00	\$38.30	\$72,195.50	\$40.00	\$75,400.00
4	8" PVC WATER PIPE, C-900, DR 18, CL 235 RESTRAINED JOINT WATER, ALL DEPTHS, TO INCLUDE FITTINGS, BEDDING AND BACKFILL, COMPLETE IN PLACE	LF	183	\$38.00	\$6,954.00	\$38.32	\$7,012.56	\$51.00	\$9,333.00
5	FIRE HYDRANT UNIT, ALL DEPTHS, TO INCLUDE APPROPRIATE TEE, 6" GATE VALVE & BOX, 6" LEAD AND FIRE HYDRANT, BEDDING AND BACKFILL, COMPLETE IN PLACE	EA	7	\$4,842.00	\$33,894.00	\$5,572.63	\$39,008.41	\$4,500.00	\$31,500.00
6	6" AWWA GATE VALVE & BOX AND ADJUSTMENTS AS NECESSARY, COMPLETE IN PLACE	EA	2	\$988.00	\$1,976.00	\$1,061.43	\$2,122.86	\$1,100.00	\$2,200.00
7	8" AWWA GATE VALVE & BOX AND ADJUSTMENTS AS NECESSARY, COMPLETE IN PLACE	EA	6	\$1,490.00	\$8,940.00	\$1,564.95	\$9,389.70	\$1,600.00	\$9,600.00
8	6" PLUG AND CLAMP, COMPLETE IN PLACE	EA	1	\$234.00	\$234.00	\$325.06	\$325.06	\$250.00	\$250.00
9	REMOVE AND DISPOSE OF 8" PLUG AND CLAMP AND BLOW-OFF VALVE AND CONNECT PROPOSED 8" WATER LINE, COMPLETE IN PLACE	EA	1	\$998.00	\$998.00	\$957.53	\$957.53	\$600.00	\$600.00
10	2" BLOW-OFF VALVE AND BOX, COMPLETE IN PLACE	EA	1	\$1,017.00	\$1,017.00	\$991.54	\$991.54	\$1,000.00	\$1,000.00
11	ADDITIONAL CAST IRON FITTINGS, (TO BE USED ONLY AT THE WRITTEN DIRECTION OF THE ENGINEER), COMPLETE IN PLACE	TON	0.7	\$6,276.00	\$4,393.20	\$1,023.06	\$716.14	\$100.00	\$70.00
12	UTILITY SPOIL TO BE HAULED, SPREAD AND COMPACTED TO 95% STANDARD PROCTOR DENSITY (WITHIN PROJECT LIMITS), COMPLETE IN PLACE	CY	796	\$1.90	\$1,512.40	\$2.41	\$1,918.36	\$2.00	\$1,592.00
13	TRENCH SAFETY SYSTEM, ALL DEPTHS, COMPLETE IN PLACE	LF	4945	\$0.30	\$1,483.50	\$0.01	\$49.45	\$0.10	\$494.50
14	SHORT SIDE SINGLE OR DOUBLE SERVICE, 1" (CTS POLYETHYLENE, SDR-9) WATER SERVICE, CURB STOP, MARKER AND ALL NECESSARY CONNECTORS, PLUGS AND TAPS, COMPLETE IN PLACE	EA	14	\$678.00	\$9,492.00	\$717.57	\$10,045.98	\$650.00	\$9,100.00
15	LONG SIDE SINGLE OR DOUBLE SERVICE, 1" (CTS POLYETHYLENE, SDR-9) WATER SERVICE, CURB STOP, MARKER AND ALL NECESSARY CONNECTORS, PLUGS AND TAPS, COMPLETE IN PLACE	EA	30	\$949.00	\$28,470.00	\$1,463.90	\$43,917.00	\$1,390.00	\$41,700.00
16	METER BOX (DFW PLASTICS, INC., MODEL NO. DFW 1300.12.IT), OR APPROVED EQUAL, COMPLETE IN PLACE	EA	78	\$53.00	\$4,134.00	\$84.45	\$6,587.10	\$25.00	\$1,950.00
<b>WATER ITEMS - SECTION 15 SUBTOTAL:</b>					<b>\$215,154.10</b>	<b>\$225,955.03</b>			<b>\$217,275.50</b>
<b>SANITARY SEWER ITEMS - SECTION 15</b>									
1	8" PVC SEWER PIPE, ASTM D-2241, SDR 26, 0'-12' CUT, TO INCLUDE BEDDING AND BACKFILL, COMPLETE IN PLACE	LF	2877	\$45.00	\$129,465.00	\$43.21	\$124,315.17	\$41.00	\$117,957.00
2	TRENCH SAFETY SYSTEM, ALL DEPTHS, COMPLETE IN PLACE	LF	3950	\$0.30	\$1,185.00	\$0.01	\$39.50	\$0.10	\$395.00
3	STANDARD 4' DIAMETER SANITARY SEWER MANHOLE, (0' - 8' DEPTH), INCLUDES PLASTIC INFLOW PROTECTORS, PROTECTIVE INTERIOR COATING (XYPEX ADMIX C-1000R, OR APPROVED EQUAL) AND ADJUSTMENTS, COMPLETE IN PLACE	EA	19	\$3,827.00	\$72,713.00	\$3,484.42	\$66,203.98	\$4,000.00	\$76,000.00

**BID TABULATION FOR:**

**BID OPENING DATE:**  
**BID OPENING LOCATION:**  
**TABULATION BY:**  
**TABULATION DATE:**  
**LJA JOB NO.**

CONSTRUCTION OF THE WATER, SANITARY SEWER AND DRAINAGE FACILITIES  
 TO SERVE MAGNOLIA RIDGE FOREST SECTION 15 AND SECTION 16  
 MONTGOMERY COUNTY MUNICIPAL UTILITY DISTRICT NO. 108  
 CITY OF MAGNOLIA, MONTGOMERY COUNTY, TEXAS  
 DECEMBER 8, 2021  
 LJA ENGINEERING, INC.  
 D. FORREST  
 DECEMBER 9, 2021  
 2025-1415D (9.2)

ITEM	DESCRIPTION	UNIT	QTY	1) BLAZEY CONSTRUCTION SERVICES LLC		2) CE BARKER, LTD		3) PRINCIPAL SERVICES, LTD	
				UNIT COST	TOTAL COST	UNIT COST	TOTAL COST	UNIT COST	TOTAL COST
4	EXTRA DEPTH OF 4' DIAMETER STANDARD SANITARY SEWER MANHOLE, (OVER 8' DEPTH), COMPLETE IN PLACE	VF	32.7	\$241.00	\$7,880.70	\$214.64	\$7,018.73	\$400.00	\$13,080.00
5	LONG SIDE SINGLE OR DOUBLE 6" GREEN PVC PIPE SERVICE LEADS, ASTM D-2241, SDR 26, ALL DEPTHS, INCLUDING CEMENT STABILIZED SAND BACKFILL, RISER/STACK, WYE, PLUG, MARKER, MANHOLE DROPS, AND ANY NECESSARY FITTINGS, ETC., COMPLETE IN PLACE	LF	705	\$70.00	\$49,350.00	\$61.33	\$43,237.65	\$66.00	\$46,530.00
6	SHORT SIDE SINGLE OR DOUBLE 6" GREEN PVC PIPE SERVICE LEADS, ASTM D-2241, SDR 26, ALL DEPTHS, INCLUDING CEMENT STABILIZED SAND BACKFILL, RISER/STACK, WYE, PLUG, MARKER, MANHOLE DROPS, AND ANY NECESSARY FITTINGS, ETC., COMPLETE IN PLACE	EA	29	\$1,154.00	\$33,466.00	\$1,127.57	\$32,699.53	\$2,400.00	\$69,600.00
7	ADDITIONAL COST FOR SANITARY SEWER BEDDING & BACKFILL FOR UNSATISFACTORY SOIL CONDITIONS (TO BE USED ONLY AT THE WRITTEN DIRECTION OF THE ENGINEER), COMPLETE IN PLACE	LF	100	\$15.00	\$1,500.00	\$15.00	\$1,500.00	\$15.00	\$1,500.00
8	DEWATERING (TO BE USED ONLY AT THE WRITTEN DIRECTION OF THE ENGINEER), COMPLETE IN PLACE	LF	500	\$20.00	\$10,000.00	\$20.00	\$10,000.00	\$25.00	\$12,500.00
9	UTILITY SPOIL TO BE HAULED, SPREAD, AND COMPACTED TO 95% STANDARD PROCTOR DENSITY (WITHIN PROJECT LIMITS), COMPLETE IN PLACE	CY	1418	\$1.90	\$2,694.20	\$2.41	\$3,417.38	\$2.00	\$2,836.00
10	CORE INTO EXISTING SANITARY MANHOLE AND CONNECT PROPOSED 8" SANITARY SEWER LINE, INCLUDES INTERNAL SANITARY SEWER MANHOLE DROP STRUCTURE, MANHOLE VENT, AND PERMANENT PLUG OF EXISTING STUB, ALL DEPTHS, COMPLETE IN PLACE	EA	1	\$3,829.00	\$3,829.00	\$3,831.70	\$3,831.70	\$1,000.00	\$1,000.00
<b>SANITARY SEWER ITEMS - SECTION 15 SUBTOTAL:</b>					<b>\$312,082.90</b>		<b>\$292,263.64</b>		<b>\$341,398.00</b>
<b>DRAINAGE FACILITIES ITEMS - SECTION 15</b>									
1	24" RCP STORM SEWER, C-76, CLASS III, ALL CUTS, TO INCLUDE BEDDING AND BACKFILL AND CEMENT STABILIZED SAND BACKFILL UNDER AND WITHIN 1' OF PAVING, COMPLETE IN PLACE	LF	707	\$77.00	\$54,439.00	\$88.49	\$62,562.43	\$75.00	\$53,025.00
2	30" RCP STORM SEWER, C-76, CLASS III, ALL CUTS, TO INCLUDE BEDDING AND BACKFILL AND CEMENT STABILIZED SAND BACKFILL UNDER AND WITHIN 1' OF PAVING, COMPLETE IN PLACE	LF	484	\$93.00	\$45,012.00	\$109.51	\$53,002.84	\$99.00	\$47,916.00
3	36" RCP STORM SEWER, C-76, CLASS III, ALL CUTS, TO INCLUDE BEDDING AND BACKFILL AND CEMENT STABILIZED SAND BACKFILL UNDER AND WITHIN 1' OF PAVING, COMPLETE IN PLACE	LF	560	\$129.00	\$72,240.00	\$149.05	\$83,468.00	\$150.00	\$84,000.00
4	42" RCP STORM SEWER, C-76, CLASS III, ALL CUTS, TO INCLUDE BEDDING AND BACKFILL AND CEMENT STABILIZED SAND BACKFILL UNDER AND WITHIN 1' OF PAVING, COMPLETE IN PLACE	LF	260	\$172.00	\$44,720.00	\$192.16	\$49,961.60	\$215.00	\$55,900.00
5	TRENCH SAFETY SYSTEM, COMPLETE IN PLACE	LF	2011	\$0.30	\$603.30	\$0.01	\$20.11	\$0.10	\$201.10
6	TYPE "C" ROUND MANHOLE, 42" AND SMALLER PER CITY OF MAGNOLIA DETAIL, ALL DEPTHS, COMPLETE IN PLACE	EA	13	\$3,568.00	\$46,384.00	\$3,755.23	\$48,817.99	\$2,800.00	\$36,400.00
7	TYPE "C" ROUND MANHOLE, 48" AND LARGER PER CITY OF MAGNOLIA DETAIL, ALL DEPTHS, COMPLETE IN PLACE	EA	1	\$5,117.00	\$5,117.00	\$4,958.83	\$4,958.83	\$3,700.00	\$3,700.00
8	TYPE "C" ROUND MANHOLE WITH TYPE "A" INLET TOP, 42" AND SMALLER PER CITY OF MAGNOLIA DETAIL, ALL DEPTHS, COMPLETE IN PLACE	EA	2	\$6,775.00	\$13,550.00	\$4,417.21	\$8,834.42	\$2,800.00	\$5,600.00
9	STAGE I - REINFORCED CONCRETE TYPE "C" INLET, 5' OPENING, ALL DEPTHS, INCLUDES TEMPORARY INLET PROTECTION BARRIER FOR STAGE I INLETS, COMPLETE IN PLACE	EA	6	\$1,607.00	\$9,642.00	\$1,486.45	\$8,918.70	\$1,100.00	\$6,600.00

**BID TABULATION FOR:**

**BID OPENING DATE:**  
**BID OPENING LOCATION:**  
**TABULATION BY:**  
**TABULATION DATE:**  
**LJA JOB NO.**

CONSTRUCTION OF THE WATER, SANITARY SEWER AND DRAINAGE FACILITIES  
 TO SERVE MAGNOLIA RIDGE FOREST SECTION 15 AND SECTION 16  
 MONTGOMERY COUNTY MUNICIPAL UTILITY DISTRICT NO. 108  
 CITY OF MAGNOLIA, MONTGOMERY COUNTY, TEXAS  
 DECEMBER 8, 2021  
 LJA ENGINEERING, INC.  
 D. FORREST  
 DECEMBER 9, 2021  
 2025-1415D (9.2)

ITEM	DESCRIPTION	UNIT	QTY	1) BLAZEY CONSTRUCTION SERVICES LLC		2) CE BARKER, LTD		3) PRINCIPAL SERVICES, LTD	
				UNIT COST	TOTAL COST	UNIT COST	TOTAL COST	UNIT COST	TOTAL COST
10	STAGE II – REINFORCED CONCRETE TYPE “C” INLET, 5’ OPENING, COMPLETE IN PLACE	EA	6	\$1,326.00	\$7,956.00	\$1,366.09	\$8,196.54	\$1,800.00	\$10,800.00
11	STAGE I – REINFORCED CONCRETE TYPE “C” INLET, 10’ OPENING, ALL DEPTHS, INCLUDES TEMPORARY INLET PROTECTION BARRIER FOR STAGE I INLETS, COMPLETE IN PLACE	EA	7	\$1,607.00	\$11,249.00	\$1,486.45	\$10,405.15	\$1,200.00	\$8,400.00
12	STAGE II – REINFORCED CONCRETE TYPE “C” INLET, 10’ OPENING, COMPLETE IN PLACE	EA	7	\$1,679.00	\$11,753.00	\$1,606.81	\$11,247.67	\$2,200.00	\$15,400.00
13	OVERFLOW DRAINAGE SWALE, 4:1 SIDE SLOPES, 2’ BOTTOM WIDTH, INCLUDES EXCAVATION, HAULING AND GRADING, COMPLETE IN PLACE	LF	260	\$6.00	\$1,560.00	\$6.82	\$1,773.20	\$5.00	\$1,300.00
14	UTILITY SPOIL TO BE HAULED, SPREAD, AND COMPACTED TO 95% STANDARD PROCTOR DENSITY (WITHIN PROJECT LIMITS), COMPLETE IN PLACE	CY	2285	\$1.90	\$4,341.50	\$2.41	\$5,506.85	\$2.00	\$4,570.00
15	DEWATERING, (TO BE USED ONLY AT THE WRITTEN DIRECTION OF THE ENGINEER), COMPLETE IN PLACE	LF	100	\$20.00	\$2,000.00	\$20.00	\$2,000.00	\$25.00	\$2,500.00
16	CURLEX EROSION CONTROL BLANKET (OR APPROVED EQUAL) OVER THE OVERFLOW SWALE, COMPLETE IN PLACE	SY	557	\$4.00	\$2,228.00	\$2.25	\$1,253.25	\$2.50	\$1,392.50
17	OUTFALL STRUCTURE FOR 36” RCP INCLUDES 4” SLOPE PAVEMENT AND CEMENT STABILIZED SAND, COMPLETE IN PLACE	EA	2	\$9,066.00	\$18,132.00	\$5,163.44	\$10,326.88	\$5,000.00	\$10,000.00
18	OUTFALL STRUCTURE FOR 42” RCP, INCLUDES 4” SLOPE PAVEMENT AND CEMENT STABILIZED SAND, COMPLETE IN PLACE	EA	1	\$7,182.00	\$7,182.00	\$5,524.52	\$5,524.52	\$5,000.00	\$5,000.00
<b>DRAINAGE FACILITIES ITEMS - SECTION 15 SUBTOTAL:</b>					<b>\$358,108.80</b>	<b>\$376,778.98</b>	<b>\$352,704.60</b>		
<b>WATER ITEMS - SECTION 16</b>									
1	FULL CONSTRUCTION STAKING FOR SECTION 16 ITEMS, COORDINATE WITH GBI PARTNERS, L.P., JON BORDOVSKY, 281.499.4539, COMPLETE IN PLACE	LS	1	\$9,126.00	\$9,126.00	\$9,126.00	\$9,126.00	\$9,126.00	\$9,126.00
2	4” PVC WATER PIPE, C-900, DR 18, CL 235 ALL DEPTHS TO INCLUDE FITTINGS, BEDDING AND BACKFILL, COMPLETE IN PLACE	LF	167	\$17.00	\$2,839.00	\$16.11	\$2,690.37	\$25.00	\$4,175.00
3	4” PVC WATER PIPE, C-900, DR 18, CL 235, RESTRAINED JOINT WATER LINE, ALL DEPTHS, TO INCLUDE FITTINGS, BEDDING AND BACKFILL, COMPLETE IN PLACE	LF	35	\$30.00	\$1,050.00	\$35.68	\$1,248.80	\$27.00	\$945.00
4	6” PVC WATER PIPE, C-900, DR 18, CL 235 ALL DEPTHS TO INCLUDE FITTINGS, BEDDING AND BACKFILL, COMPLETE IN PLACE	LF	112	\$26.00	\$2,912.00	\$25.66	\$2,873.92	\$30.00	\$3,360.00
5	8” PVC WATER PIPE, C-900, DR 18, CL 235 RESTRAINED JOINT WATER LINE, ALL DEPTHS, TO INCLUDE FITTINGS, BEDDING AND BACKFILL, COMPLETE IN PLACE	LF	556	\$34.00	\$18,904.00	\$37.76	\$20,994.56	\$46.00	\$25,576.00
6	8” PVC WATER PIPE, C-900, DR 18, CL 235, ALL DEPTHS, TO INCLUDE FITTINGS, BEDDING AND BACKFILL, COMPLETE IN PLACE	LF	1311	\$38.00	\$49,818.00	\$36.85	\$48,310.35	\$41.00	\$53,751.00
7	FIRE HYDRANT UNIT, ALL DEPTHS, TO INCLUDE APPROPRIATE TEE, 6” GATE VALVE & BOX, 6” LEAD AND FIRE HYDRANT, BEDDING AND BACKFILL, COMPLETE IN PLACE	EA	4	\$4,842.00	\$19,368.00	\$5,570.00	\$22,280.00	\$4,500.00	\$18,000.00
8	4” PLUG AND CLAMP, COMPLETE IN PLACE	EA	1	\$198.00	\$198.00	\$274.36	\$274.36	\$240.00	\$240.00
9	8” AWWA GATE VALVE & BOX AND ADJUSTMENTS AS NECESSARY, COMPLETE IN PLACE	EA	4	\$1,490.00	\$5,960.00	\$1,564.95	\$6,259.80	\$1,600.00	\$6,400.00
10	2” BLOW-OFF VALVE AND BOX, COMPLETE IN PLACE	EA	1	\$1,017.00	\$1,017.00	\$991.54	\$991.54	\$1,000.00	\$1,000.00

**BID TABULATION FOR:**

**BID OPENING DATE:**  
**BID OPENING LOCATION:**  
**TABULATION BY:**  
**TABULATION DATE:**  
**LJA JOB NO.**

CONSTRUCTION OF THE WATER, SANITARY SEWER AND DRAINAGE FACILITIES  
 TO SERVE MAGNOLIA RIDGE FOREST SECTION 15 AND SECTION 16  
 MONTGOMERY COUNTY MUNICIPAL UTILITY DISTRICT NO. 108  
 CITY OF MAGNOLIA, MONTGOMERY COUNTY, TEXAS  
 DECEMBER 8, 2021  
 LJA ENGINEERING, INC.  
 D. FORREST  
 DECEMBER 9, 2021  
 2025-1415D (9.2)

ITEM	DESCRIPTION	UNIT	QTY	1) BLAZEY CONSTRUCTION SERVICES LLC		2) CE BARKER, LTD		3) PRINCIPAL SERVICES, LTD	
				UNIT COST	TOTAL COST	UNIT COST	TOTAL COST	UNIT COST	TOTAL COST
11	ADDITIONAL CAST IRON FITTINGS, (TO BE USED ONLY AT THE WRITTEN DIRECTION OF THE ENGINEER), COMPLETE IN PLACE	TON	1	\$6,276.00	\$6,276.00	\$1,023.06	\$1,023.06	\$100.00	\$100.00
12	UTILITY SPOIL TO BE HAULED, SPREAD AND COMPACTED TO 95% STANDARD PROCTOR DENSITY (WITHIN PROJECT LIMITS), COMPLETE IN PLACE	CY	660	\$1.90	\$1,254.00	\$2.41	\$1,590.60	\$2.00	\$1,320.00
13	TRENCH SAFETY SYSTEM, ALL DEPTHS, COMPLETE IN PLACE	LF	2852	\$0.30	\$855.60	\$0.01	\$28.52	\$0.10	\$285.20
14	SHORT SIDE SINGLE OR DOUBLE SERVICE, 1" (CTS POLYETHYLENE, SDR-9) WATER SERVICE, CURB STOP, MARKER AND ALL NECESSARY CONNECTORS, PLUGS AND TAPS, COMPLETE IN PLACE	EA	12	\$678.00	\$8,136.00	\$719.07	\$8,628.84	\$670.00	\$8,040.00
15	LONG SIDE SINGLE OR DOUBLE SERVICE, 1" (CTS POLYETHYLENE, SDR-9) WATER SERVICE, CURB STOP, MARKER AND ALL NECESSARY CONNECTORS, PLUGS AND TAPS, COMPLETE IN PLACE	EA	17	\$951.00	\$16,167.00	\$1,465.91	\$24,920.47	\$1,300.00	\$22,100.00
16	METER BOX (DFW PLASTICS, INC., MODEL NO. DFW 1300.12.IT), OR APPROVED EQUAL, COMPLETE IN PLACE	EA	53	\$53.00	\$2,809.00	\$84.45	\$4,475.85	\$25.00	\$1,325.00
17	TRENCHLESS CONSTRUCTION OF 8" WATERLINE CASING, ALL DEPTHS, TO INCLUDE FITTINGS, BORE PITS, BEDDING AND BACKFILL OF BORE PITS, SPACERS AND END SEALS, DEWATERING, AND TRENCH SAFETY FOR BORE PIT, COMPLETE IN PLACE	LF	175	\$58.00	\$10,150.00	\$68.78	\$12,036.50	\$136.00	\$23,800.00
18	14" HDPE CASING FOR 8" WATER LINE, INCLUDING SPACERS AND END SEALS, ALL APPUTENANCES, ALL DEPTHS, COMPLETE IN PLACE	LF	175	\$104.00	\$18,200.00	\$67.86	\$11,875.50	\$72.00	\$12,600.00
19	12" X 8" TAPPING SLEEVE AND VALVE & BOX, COMPLETE IN PLACE	EA	1	\$4,218.00	\$4,218.00	\$5,975.87	\$5,975.87	\$5,100.00	\$5,100.00
<b>WATER ITEMS - SECTION 16 SUBTOTAL:</b>					<b>\$179,257.60</b>	<b>\$185,604.91</b>	<b>\$197,243.20</b>		
<b>SANITARY SEWER ITEMS - SECTION 16</b>									
1	8" PVC SEWER PIPE, ASTM D-2241, SDR 26, 0'-12' CUT, TO INCLUDE BEDDING AND BACKFILL, COMPLETE IN PLACE	LF	408	\$48.00	\$19,584.00	\$45.19	\$18,437.52	\$41.00	\$16,728.00
2	8" PVC SEWER PIPE, ASTM D-2241, SDR 26, 12'-16' CUT, TO INCLUDE BEDDING AND BACKFILL, COMPLETE IN PLACE	LF	1167	\$57.00	\$66,519.00	\$52.01	\$60,695.67	\$48.00	\$56,016.00
3	TRENCH SAFETY SYSTEM, COMPLETE IN PLACE	LF	2483	\$0.30	\$744.90	\$0.01	\$24.83	\$0.10	\$248.30
4	STANDARD 4' DIAMETER SANITARY SEWER MANHOLE, (0' - 8' DEPTH), INCLUDES PLASTIC INFLOW PROTECTORS, PROTECTIVE INTERIOR COATING (XYPEX ADMIX C-1000R, OR APPROVED EQUAL) AND ADJUSTMENTS, COMPLETE IN PLACE	EA	9	\$3,827.00	\$34,443.00	\$3,484.42	\$31,359.78	\$4,100.00	\$36,900.00
5	STANDARD 5' DIAMETER SANITARY SEWER MANHOLE, (0' - 10' DEPTH), INCLUDES PLASTIC INFLOW PROTECTORS, PROTECTIVE INTERIOR COATING (XYPEX ADMIX C-1000R, OR APPROVED EQUAL) AND ADJUSTMENTS, COMPLETE IN PLACE	EA	3	\$6,359.00	\$19,077.00	\$4,796.35	\$14,389.05	\$5,300.00	\$15,900.00
6	EXTRA DEPTH OF 4' DIAMETER STANDARD SANITARY SEWER MANHOLE, (OVER 8' DEPTH), COMPLETE IN PLACE	VF	12.58	\$241.00	\$3,031.78	\$214.64	\$2,700.17	\$400.00	\$5,032.00
7	EXTRA DEPTH OF 5' DIAMETER STANDARD SANITARY SEWER MANHOLE, (OVER 10' DEPTH), COMPLETE IN PLACE	VF	10.47	\$577.00	\$6,041.19	\$304.91	\$3,192.41	\$500.00	\$5,235.00
8	LONG SIDE SINGLE OR DOUBLE 6" GREEN PVC PIPE SERVICE LEADS, ASTM D-2241, SDR 26, ALL DEPTHS, INCLUDING CEMENT STABILIZED SAND BACKFILL, RISER/STACK, WYE, PLUG, MARKER, MANHOLE DROPS, AND ANY NECESSARY FITTINGS, ETC., COMPLETE IN PLACE	LF	672	\$63.00	\$42,336.00	\$51.17	\$34,386.24	\$63.00	\$42,336.00

**BID TABULATION FOR:**

**BID OPENING DATE:**  
**BID OPENING LOCATION:**  
**TABULATION BY:**  
**TABULATION DATE:**  
**LJA JOB NO.**

CONSTRUCTION OF THE WATER, SANITARY SEWER AND DRAINAGE FACILITIES  
 TO SERVE MAGNOLIA RIDGE FOREST SECTION 15 AND SECTION 16  
 MONTGOMERY COUNTY MUNICIPAL UTILITY DISTRICT NO. 108  
 CITY OF MAGNOLIA, MONTGOMERY COUNTY, TEXAS  
 DECEMBER 8, 2021  
 LJA ENGINEERING, INC.  
 D. FORREST  
 DECEMBER 9, 2021  
 2025-1415D (9.2)

ITEM	DESCRIPTION	UNIT	QTY	1) BLAZEY CONSTRUCTION SERVICES LLC		2) CE BARKER, LTD		3) PRINCIPAL SERVICES, LTD	
				UNIT COST	TOTAL COST	UNIT COST	TOTAL COST	UNIT COST	TOTAL COST
9	SHORT SIDE SINGLE OR DOUBLE 6" GREEN PVC PIPE SERVICE LEADS, ASTM D-2241, SDR 26, ALL DEPTHS, INCLUDING CEMENT STABILIZED SAND BACKFILL, RISER/STACK, WYE, PLUG, MARKER, MANHOLE DROPS, AND ANY NECESSARY FITTINGS, ETC., COMPLETE IN PLACE	EA	17	\$1,336.00	\$22,712.00	\$1,289.72	\$21,925.24	\$2,500.00	\$42,500.00
10	STANDARD SANITARY SEWER STACKS, ALL DEPTHS, COMPLETE IN PLACE	EA	7	\$784.00	\$5,488.00	\$960.83	\$6,725.81	\$500.00	\$3,500.00
11	STANDARD SANITARY SEWER MANHOLE EXTERNAL DROP STRUCTURE, ALL DEPTHS, COMPLETE IN PLACE	EA	1	\$1,018.00	\$1,018.00	\$1,538.47	\$1,538.47	\$1,000.00	\$1,000.00
12	EXTRA DEPTH FOR STANDARD SANITARY SEWER MANHOLE DROP STRUCTURE (OVER 2'), COMPLETE IN PLACE	VF	2.05	\$40.00	\$82.00	\$68.49	\$140.40	\$48.00	\$98.40
13	STANDARD MANHOLE VENT FOR SEALED SANITARY SEWER (SEE STANDARD DETAIL ON SHEET 18), COMPLETE IN PLACE	EA	1	\$3,155.00	\$3,155.00	\$4,028.39	\$4,028.39	\$2,000.00	\$2,000.00
14	ADDITIONAL COST FOR SANITARY SEWER BEDDING & BACKFILL FOR UNSATISFACTORY SOIL CONDITIONS (TO BE USED ONLY AT THE WRITTEN DIRECTION OF THE ENGINEER), COMPLETE IN PLACE	LF	100	\$15.00	\$1,500.00	\$15.00	\$1,500.00	\$15.00	\$1,500.00
15	DEWATERING (TO BE USED ONLY AT THE WRITTEN DIRECTION OF THE ENGINEER), COMPLETE IN PLACE	LF	500	\$20.00	\$10,000.00	\$20.00	\$10,000.00	\$25.00	\$12,500.00
16	EXTRA CEMENT STABILIZED SAND (TO BE USED ONLY AT THE WRITTEN DIRECTION OF THE ENGINEER), COMPLETE IN PLACE	CY	20	\$50.00	\$1,000.00	\$50.00	\$1,000.00	\$50.00	\$1,000.00
17	UTILITY SPOIL TO BE HAULED, SPREAD, AND COMPACTED TO 95% STANDARD PROCTOR DENSITY (WITHIN PROJECT LIMITS), COMPLETE IN PLACE	CY	1070	\$1.90	\$2,033.00	\$2.41	\$2,578.70	\$2.00	\$2,140.00
<b>SANITARY SEWER ITEMS - SECTION 16 SUBTOTAL:</b>						<b>\$238,764.87</b>		<b>\$214,622.68</b>	<b>\$244,633.70</b>
<b>DRAINAGE FACILITIES ITEMS - SECTION 16</b>									
1	24" RCP STORM SEWER, C-76, CLASS III, ALL CUTS, TO INCLUDE BEDDING AND BACKFILL AND CEMENT STABILIZED SAND BACKFILL UNDER AND WITHIN 1' OF PAVING, COMPLETE IN PLACE	LF	591	\$75.00	\$44,325.00	\$86.59	\$51,174.69	\$75.00	\$44,325.00
2	30" RCP STORM SEWER, C-76, CLASS III, ALL CUTS, TO INCLUDE BEDDING AND BACKFILL AND CEMENT STABILIZED SAND BACKFILL UNDER AND WITHIN 1' OF PAVING, COMPLETE IN PLACE	LF	125	\$92.00	\$11,500.00	\$107.60	\$13,450.00	\$99.00	\$12,375.00
3	TRENCH SAFETY SYSTEM, ALL DEPTHS, COMPLETE IN PLACE	LF	716	\$0.30	\$214.80	\$0.01	\$7.16	\$0.10	\$71.60
4	TYPE "C" ROUND MANHOLE WITH TYPE "A" INLET TOP, 42" AND SMALLER PER CITY OF MAGNOLIA DETAIL, ALL DEPTHS, COMPLETE IN PLACE	EA	1	\$6,945.00	\$6,945.00	\$5,139.37	\$5,139.37	\$2,700.00	\$2,700.00
5	TYPE "C" ROUND MANHOLE, 42" AND SMALLER PER CITY OF MAGNOLIA DETAIL, ALL DEPTHS, COMPLETE IN PLACE	EA	4	\$3,332.00	\$13,328.00	\$3,935.77	\$15,743.08	\$2,700.00	\$10,800.00
6	STAGE I – REINFORCED CONCRETE TYPE "C" INLET, 5' OPENING, ALL DEPTHS, INCLUDES TEMPORARY INLET PROTECTION BARRIER FOR STAGE I INLETS, COMPLETE IN PLACE	EA	5	\$1,460.00	\$7,300.00	\$1,486.45	\$7,432.25	\$1,100.00	\$5,500.00
7	STAGE II – REINFORCED CONCRETE TYPE "C" INLET, 5' OPENING, COMPLETE IN PLACE	EA	5	\$1,326.00	\$6,630.00	\$1,366.09	\$6,830.45	\$1,800.00	\$9,000.00
8	STAGE I – REINFORCED CONCRETE TYPE "C" INLET, 10' OPENING, ALL DEPTHS, INCLUDES TEMPORARY INLET PROTECTION BARRIER FOR STAGE I INLETS, COMPLETE IN PLACE	EA	1	\$1,460.00	\$1,460.00	\$1,486.45	\$1,486.45	\$1,200.00	\$1,200.00
9	STAGE II – REINFORCED CONCRETE TYPE "C" INLET, 10' OPENING, COMPLETE IN PLACE	EA	1	\$1,679.00	\$1,679.00	\$1,606.81	\$1,606.81	\$2,200.00	\$2,200.00

**BID TABULATION FOR:**

**BID OPENING DATE:**  
**BID OPENING LOCATION:**  
**TABULATION BY:**  
**TABULATION DATE:**  
**LJA JOB NO.**

CONSTRUCTION OF THE WATER, SANITARY SEWER AND DRAINAGE FACILITIES  
 TO SERVE MAGNOLIA RIDGE FOREST SECTION 15 AND SECTION 16  
 MONTGOMERY COUNTY MUNICIPAL UTILITY DISTRICT NO. 108  
 CITY OF MAGNOLIA, MONTGOMERY COUNTY, TEXAS  
 DECEMBER 8, 2021  
 LJA ENGINEERING, INC.  
 D. FORREST  
 DECEMBER 9, 2021  
 2025-1415D (9.2)

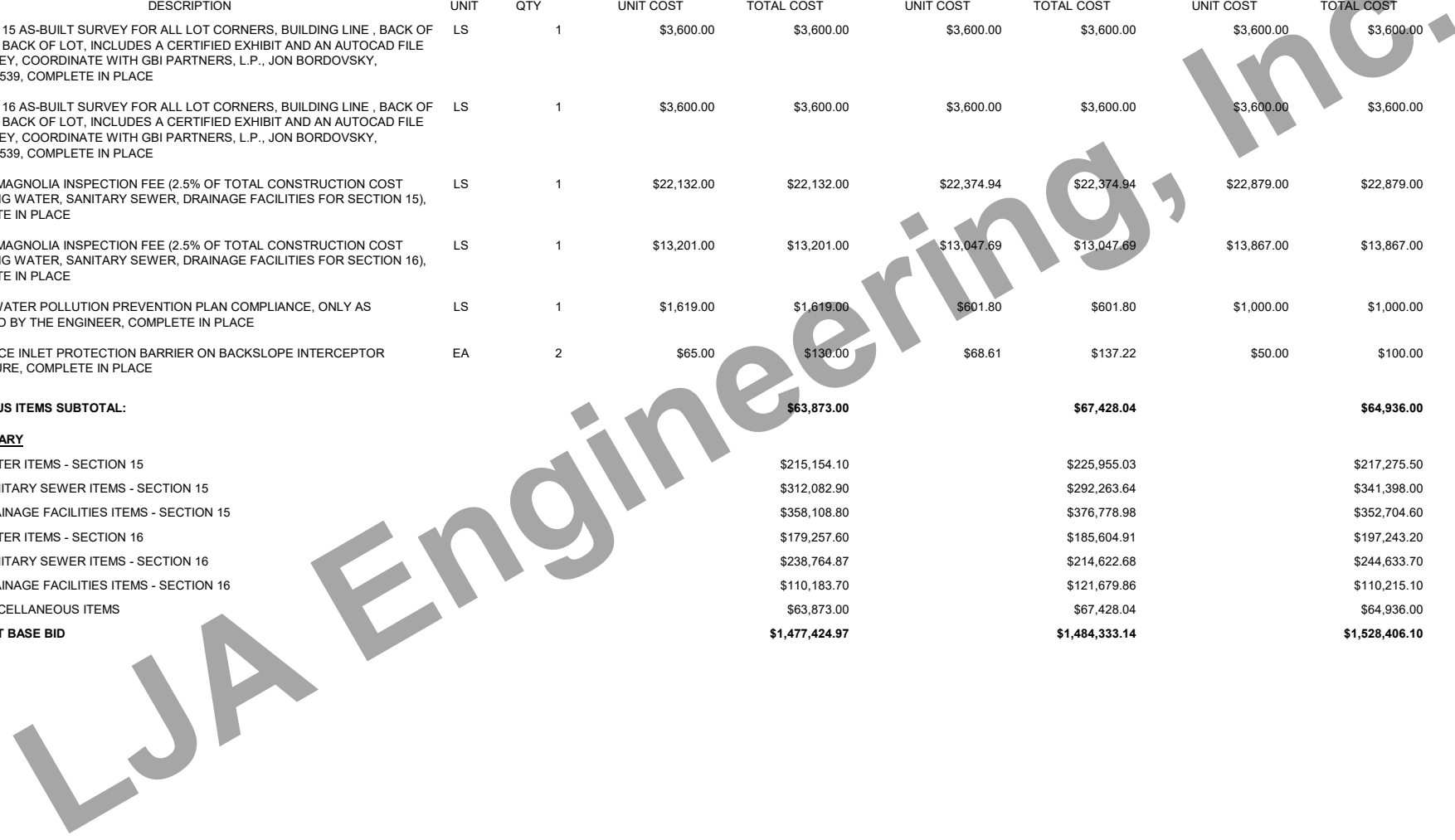
ITEM	DESCRIPTION	UNIT	QTY	1) BLAZEY CONSTRUCTION SERVICES LLC		2) CE BARKER, LTD		3) PRINCIPAL SERVICES, LTD	
				UNIT COST	TOTAL COST	UNIT COST	TOTAL COST	UNIT COST	TOTAL COST
10	DEWATERING, (TO BE USED ONLY AT THE WRITTEN DIRECTION OF THE ENGINEER), COMPLETE IN PLACE	LF	350	\$20.00	\$7,000.00	\$20.00	\$7,000.00	\$25.00	\$8,750.00
11	OVERFLOW DRAINAGE SWALE, 4:1 SIDE SLOPES, 2' BOTTOM WIDTH, INCLUDES EXCAVATION, HAULING AND GRADING, COMPLETE IN PLACE	LF	30	\$5.90	\$177.00	\$6.82	\$204.60	\$50.00	\$1,500.00
12	UTILITY SPOIL TO BE HAULED, SPREAD, AND COMPACTED TO 95% STANDARD PROCTOR DENSITY (WITHIN PROJECT LIMITS), COMPLETE IN PLACE	CY	633	\$1.90	\$1,202.70	\$2.41	\$1,525.53	\$2.00	\$1,266.00
13	CURLEX EROSION CONTROL BLANKET (OR APPROVED EQUAL) OVER THE OVERFLOW SWALE, COMPLETE IN PLACE	SY	211	\$4.20	\$886.20	\$2.25	\$474.75	\$2.50	\$527.50
14	OUTFALL STRUCTURE FOR 24" RCP, INCLUDES 4" SLOPE PAVEMENT AND CEMENT STABILIZED SAND, COMPLETE IN PLACE	EA	1	\$2,473.00	\$2,473.00	\$4,802.36	\$4,802.36	\$5,000.00	\$5,000.00
15	OUTFALL STRUCTURE FOR 30" RCP, INCLUDES 4" SLOPE PAVEMENT AND CEMENT STABILIZED SAND, COMPLETE IN PLACE	EA	1	\$5,063.00	\$5,063.00	\$4,802.36	\$4,802.36	\$5,000.00	\$5,000.00
<b>DRAINAGE FACILITIES ITEMS - SECTION 16 SUBTOTAL:</b>					<b>\$110,183.70</b>		<b>\$121,679.86</b>		<b>\$110,215.10</b>
<b>MISCELLANEOUS ITEMS</b>									
1	STANDARD DEDUCT FOR VARIANCE REQUESTS SUBMITTED BY THE ENGINEER ON BEHALF OF THE CONTRACTOR, (TO BE USED ONLY AS DIRECTED BY THE ENGINEER), COMPLETE IN PLACE	EA	0	-\$1,000.00	\$0.00	-\$1,000.00	\$0.00	-\$1,000.00	\$0.00
2	STANDARD DEDUCT FOR STREET CLEANING (AS DIRECTED BY THE OWNER), COMPLETE IN PLACE	HR	0	-\$125.00	\$0.00	-\$125.00	\$0.00	-\$125.00	\$0.00
3	STANDARD DEDUCT FOR DAMAGE TO WETLANDS FENCING BY THE CONTRACTOR, (AS DIRECTED BY THE ENGINEER), COMPLETE IN PLACE	LF	0	-\$10.00	\$0.00	-\$10.00	\$0.00	-\$10.00	\$0.00
4	EXTRA DEWATERING FOR UTILITY LINES, ALL LINES SIZES AND DEPTHS, (TO BE USED ONLY AT THE DIRECTION OF THE ENGINEER), COMPLETE IN PLACE	LF	100	\$20.00	\$2,000.00	\$20.00	\$2,000.00	\$25.00	\$2,500.00
5	HYDROMULCH SEEDING, OVER CURLEX EROSION CONTROL BLANKET FOR OVERFLOW SWALES, COMPLETE IN PLACE	SY	568	\$3.50	\$1,988.00	\$5.33	\$3,027.44	\$5.00	\$2,840.00
6	EXTRA CEMENT STABILIZED SAND BACKFILL, (1.5 SACKS PER TON), (TO BE USED ONLY AT THE DIRECTION OF THE ENGINEER), COMPLETE IN PLACE	CY	50	\$15.00	\$750.00	\$15.00	\$750.00	\$15.00	\$750.00
7	REPAIRS TO EXISTING MAINTENANCE BERMS, CHANNEL SIDE SLOPES AND TOE, INCLUDES REGRADING AND SEEDING (DRY APPLICATION) OF DAMAGED AREAS TO EXISTING OR BETTER CONDITIONS, COMPLETE IN PLACE	SY	1500	\$2.50	\$3,750.00	\$2.05	\$3,075.00	\$2.50	\$3,750.00
8	ADDITIONAL COST FOR STORM SEWER BEDDING AND BACKFILL FOR UNSATISFACTORY SOIL CONDITIONS, ALL SIZES & DEPTHS, (TO BE USED ONLY AT THE WRITTEN DIRECTION OF THE ENGINEER), COMPLETE IN PLACE	LF	100	\$15.00	\$1,500.00	\$15.00	\$1,500.00	\$15.00	\$1,500.00
9	INSTALL AND MAINTAIN FILTER FABRIC FENCE ALONG BOUNDARY BEFORE CONSTRUCTION STARTS (AS DIRECTED BY THE ENGINEER), COMPLETE IN PLACE	LF	3600	\$1.00	\$3,600.00	\$1.00	\$3,600.00	\$1.00	\$3,600.00
10	STAGE II INLET PROTECTION BARRIER (4 SAND BAGS PER INLET) FOR PROPOSED AND EXISTING INLETS, COMPLETE IN PLACE	EA	19	\$65.00	\$1,235.00	\$68.61	\$1,303.59	\$50.00	\$950.00
11	STABILIZED CONSTRUCTION EXIT AT LOCATION SHOWN ON PLANS, TO INCLUDE RESTRUCTURING IF REQUIRED, AND REMOVAL, (TO BE USED AT THE WRITTEN DIRECTION OF THE ENGINEER), COMPLETE IN PLACE	EA	2	\$1,766.00	\$3,532.00	\$3,201.58	\$6,403.16	\$1,500.00	\$3,000.00
12	INSTALLATION, MAINTENANCE AND REMOVAL OF CONCRETE TRUCK WASHOUT, COMPLETE IN PLACE	EA	2	\$618.00	\$1,236.00	\$1,203.60	\$2,407.20	\$500.00	\$1,000.00

**BID TABULATION FOR:**

**BID OPENING DATE:**  
**BID OPENING LOCATION:**  
**TABULATION BY:**  
**TABULATION DATE:**  
**LJA JOB NO.**

CONSTRUCTION OF THE WATER, SANITARY SEWER AND DRAINAGE FACILITIES  
 TO SERVE MAGNOLIA RIDGE FOREST SECTION 15 AND SECTION 16  
 MONTGOMERY COUNTY MUNICIPAL UTILITY DISTRICT NO. 108  
 CITY OF MAGNOLIA, MONTGOMERY COUNTY, TEXAS  
 DECEMBER 8, 2021  
 LJA ENGINEERING, INC.  
 D. FORREST  
 DECEMBER 9, 2021  
 2025-1415D (9.2)

ITEM	DESCRIPTION	UNIT	QTY	1) BLAZEY CONSTRUCTION SERVICES LLC		2) CE BARKER, LTD		3) PRINCIPAL SERVICES, LTD	
				UNIT COST	TOTAL COST	UNIT COST	TOTAL COST	UNIT COST	TOTAL COST
13	SECTION 15 AS-BUILT SURVEY FOR ALL LOT CORNERS, BUILDING LINE , BACK OF PAD AND BACK OF LOT, INCLUDES A CERTIFIED EXHIBIT AND AN AUTOCAD FILE OF SURVEY, COORDINATE WITH GBI PARTNERS, L.P., JON BORDOVSKY, 281.499.4539, COMPLETE IN PLACE	LS	1	\$3,600.00	\$3,600.00	\$3,600.00	\$3,600.00	\$3,600.00	\$3,600.00
14	SECTION 16 AS-BUILT SURVEY FOR ALL LOT CORNERS, BUILDING LINE , BACK OF PAD AND BACK OF LOT, INCLUDES A CERTIFIED EXHIBIT AND AN AUTOCAD FILE OF SURVEY, COORDINATE WITH GBI PARTNERS, L.P., JON BORDOVSKY, 281.499.4539, COMPLETE IN PLACE	LS	1	\$3,600.00	\$3,600.00	\$3,600.00	\$3,600.00	\$3,600.00	\$3,600.00
15	CITY OF MAGNOLIA INSPECTION FEE (2.5% OF TOTAL CONSTRUCTION COST INCLUDING WATER, SANITARY SEWER, DRAINAGE FACILITIES FOR SECTION 15), COMPLETE IN PLACE	LS	1	\$22,132.00	\$22,132.00	\$22,374.94	\$22,374.94	\$22,879.00	\$22,879.00
16	CITY OF MAGNOLIA INSPECTION FEE (2.5% OF TOTAL CONSTRUCTION COST INCLUDING WATER, SANITARY SEWER, DRAINAGE FACILITIES FOR SECTION 16), COMPLETE IN PLACE	LS	1	\$13,201.00	\$13,201.00	\$13,047.69	\$13,047.69	\$13,867.00	\$13,867.00
17	STORM WATER POLLUTION PREVENTION PLAN COMPLIANCE, ONLY AS DIRECTED BY THE ENGINEER, COMPLETE IN PLACE	LS	1	\$1,619.00	\$1,619.00	\$601.80	\$601.80	\$1,000.00	\$1,000.00
18	SILT FENCE INLET PROTECTION BARRIER ON BACKSLOPE INTERCEPTOR STRUCTURE, COMPLETE IN PLACE	EA	2	\$65.00	\$130.00	\$68.61	\$137.22	\$50.00	\$100.00
<b>MISCELLANEOUS ITEMS SUBTOTAL:</b>					<b>\$63,873.00</b>		<b>\$67,428.04</b>		<b>\$64,936.00</b>
<b>BIDDING SUMMARY</b>									
SUBTOTAL WATER ITEMS - SECTION 15					\$215,154.10		\$225,955.03		\$217,275.50
SUBTOTAL SANITARY SEWER ITEMS - SECTION 15					\$312,082.90		\$292,263.64		\$341,398.00
SUBTOTAL DRAINAGE FACILITIES ITEMS - SECTION 15					\$358,108.80		\$376,778.98		\$352,704.60
SUBTOTAL WATER ITEMS - SECTION 16					\$179,257.60		\$185,604.91		\$197,243.20
SUBTOTAL SANITARY SEWER ITEMS - SECTION 16					\$238,764.87		\$214,622.68		\$244,633.70
SUBTOTAL DRAINAGE FACILITIES ITEMS - SECTION 16					\$110,183.70		\$121,679.86		\$110,215.10
SUBTOTAL MISCELLANEOUS ITEMS					\$63,873.00		\$67,428.04		\$64,936.00
<b>TOTAL AMOUNT BASE BID</b>					<b>\$1,477,424.97</b>		<b>\$1,484,333.14</b>		<b>\$1,528,406.10</b>





**BID TABULATION FOR:**

CONSTRUCTION OF THE WATER, SANITARY SEWER AND DRAINAGE FACILITIES  
 TO SERVE MAGNOLIA RIDGE FOREST SECTION 15 AND SECTION 16  
 MONTGOMERY COUNTY MUNICIPAL UTILITY DISTRICT NO. 108  
 CITY OF MAGNOLIA, MONTGOMERY COUNTY, TEXAS  
 DECEMBER 8, 2021  
 LJA ENGINEERING, INC.  
 D. FORREST  
 DECEMBER 9, 2021  
 2025-1415D (9.2)

**BID OPENING DATE:**  
**BID OPENING LOCATION:**  
**TABULATION BY:**  
**TABULATION DATE:**  
**LJA JOB NO.**

ITEM	DESCRIPTION	UNIT	QTY	4) KENNETH LAMB CONSTRUCTION CO.,LTD.		5) CROSTEX CONSTRUCTION INC.		6) BAY UTILITIES. LLC	
				UNIT COST	TOTAL COST	UNIT COST	TOTAL COST	UNIT COST	TOTAL COST
<b>WATER ITEMS - SECTION 15</b>									
1	FULL CONSTRUCTION STAKING FOR SECTION 15 ITEMS, COORDINATE WITH GBI PARTNERS, L.P., JON BORDOVSKY, 281.499.4539, COMPLETE IN PLACE	LS	1	\$11,846.00	\$11,846.00	\$14,250.00	\$14,250.00	\$11,846.00	\$11,846.00
2	6" PVC WATER PIPE, C-900, DR 18, CL 235 ALL DEPTHS, TO INCLUDE FITTINGS, BEDDING AND BACKFILL, COMPLETE IN PLACE	LF	688	\$29.00	\$19,952.00	\$28.75	\$19,780.00	\$25.00	\$17,200.00
3	8" PVC WATER PIPE, C-900, DR 18, CL 235 ALL DEPTHS, TO INCLUDE FITTINGS, BEDDING AND BACKFILL, COMPLETE IN PLACE	LF	1885	\$42.00	\$79,170.00	\$39.75	\$74,928.75	\$36.00	\$67,860.00
4	8" PVC WATER PIPE, C-900, DR 18, CL 235 RESTRAINED JOINT WATER, ALL DEPTHS, TO INCLUDE FITTINGS, BEDDING AND BACKFILL, COMPLETE IN PLACE	LF	183	\$59.00	\$10,797.00	\$49.00	\$8,967.00	\$44.00	\$8,052.00
5	FIRE HYDRANT UNIT, ALL DEPTHS, TO INCLUDE APPROPRIATE TEE, 6" GATE VALVE & BOX, 6" LEAD AND FIRE HYDRANT, BEDDING AND BACKFILL, COMPLETE IN PLACE	EA	7	\$5,050.00	\$35,350.00	\$5,100.00	\$35,700.00	\$4,800.00	\$33,600.00
6	6" AWWA GATE VALVE & BOX AND ADJUSTMENTS AS NECESSARY, COMPLETE IN PLACE	EA	2	\$970.00	\$1,940.00	\$1,155.00	\$2,310.00	\$1,000.00	\$2,000.00
7	8" AWWA GATE VALVE & BOX AND ADJUSTMENTS AS NECESSARY, COMPLETE IN PLACE	EA	6	\$1,458.00	\$8,748.00	\$1,675.00	\$10,050.00	\$1,500.00	\$9,000.00
8	6" PLUG AND CLAMP, COMPLETE IN PLACE	EA	1	\$369.00	\$369.00	\$200.00	\$200.00	\$250.00	\$250.00
9	REMOVE AND DISPOSE OF 8" PLUG AND CLAMP AND BLOW-OFF VALVE AND CONNECT PROPOSED 8" WATER LINE, COMPLETE IN PLACE	EA	1	\$712.00	\$712.00	\$150.00	\$150.00	\$1,700.00	\$1,700.00
10	2" BLOW-OFF VALVE AND BOX, COMPLETE IN PLACE	EA	1	\$950.00	\$950.00	\$890.00	\$890.00	\$500.00	\$500.00
11	ADDITIONAL CAST IRON FITTINGS, (TO BE USED ONLY AT THE WRITTEN DIRECTION OF THE ENGINEER), COMPLETE IN PLACE	TON	0.7	\$1,500.00	\$1,050.00	\$2,500.00	\$1,750.00	\$1,000.00	\$700.00
12	UTILITY SPOIL TO BE HAULED, SPREAD AND COMPACTED TO 95% STANDARD PROCTOR DENSITY (WITHIN PROJECT LIMITS), COMPLETE IN PLACE	CY	796	\$4.00	\$3,184.00	\$1.50	\$1,194.00	\$4.00	\$3,184.00
13	TRENCH SAFETY SYSTEM, ALL DEPTHS, COMPLETE IN PLACE	LF	4945	\$1.00	\$4,945.00	\$0.05	\$247.25	\$0.10	\$494.50
14	SHORT SIDE SINGLE OR DOUBLE SERVICE, 1" (CTS POLYETHYLENE, SDR-9) WATER SERVICE, CURB STOP, MARKER AND ALL NECESSARY CONNECTORS, PLUGS AND TAPS, COMPLETE IN PLACE	EA	14	\$851.00	\$11,914.00	\$635.00	\$8,890.00	\$900.00	\$12,600.00
15	LONG SIDE SINGLE OR DOUBLE SERVICE, 1" (CTS POLYETHYLENE, SDR-9) WATER SERVICE, CURB STOP, MARKER AND ALL NECESSARY CONNECTORS, PLUGS AND TAPS, COMPLETE IN PLACE	EA	30	\$1,440.00	\$43,200.00	\$1,385.00	\$41,550.00	\$1,400.00	\$42,000.00
16	METER BOX (DFW PLASTICS, INC., MODEL NO. DFW 1300.12.IT), OR APPROVED EQUAL, COMPLETE IN PLACE	EA	78	\$148.00	\$11,544.00	\$30.00	\$2,340.00	\$72.00	\$5,616.00
<b>WATER ITEMS - SECTION 15 SUBTOTAL:</b>					<b>\$245,671.00</b>		<b>\$223,197.00</b>		<b>\$216,602.50</b>
<b>SANITARY SEWER ITEMS - SECTION 15</b>									
1	8" PVC SEWER PIPE, ASTM D-2241, SDR 26, 0'-12' CUT, TO INCLUDE BEDDING AND BACKFILL, COMPLETE IN PLACE	LF	2877	\$41.00	\$117,957.00	\$43.75	\$125,868.75	\$62.00	\$178,374.00
2	TRENCH SAFETY SYSTEM, ALL DEPTHS, COMPLETE IN PLACE	LF	3950	\$1.00	\$3,950.00	\$0.10	\$395.00	\$0.50	\$1,975.00
3	STANDARD 4' DIAMETER SANITARY SEWER MANHOLE, (0' - 8' DEPTH), INCLUDES PLASTIC INFLOW PROTECTORS, PROTECTIVE INTERIOR COATING (XYPEX ADMIX C-1000R, OR APPROVED EQUAL) AND ADJUSTMENTS, COMPLETE IN PLACE	EA	19	\$3,445.00	\$65,455.00	\$3,220.00	\$61,180.00	\$3,700.00	\$70,300.00

**BID TABULATION FOR:**

CONSTRUCTION OF THE WATER, SANITARY SEWER AND DRAINAGE FACILITIES  
 TO SERVE MAGNOLIA RIDGE FOREST SECTION 15 AND SECTION 16  
 MONTGOMERY COUNTY MUNICIPAL UTILITY DISTRICT NO. 108  
 CITY OF MAGNOLIA, MONTGOMERY COUNTY, TEXAS  
 DECEMBER 8, 2021  
 LJA ENGINEERING, INC.  
 D. FORREST  
 DECEMBER 9, 2021  
 2025-1415D (9.2)

**BID OPENING DATE:**  
**BID OPENING LOCATION:**  
**TABULATION BY:**  
**TABULATION DATE:**  
**LJA JOB NO.**

ITEM	DESCRIPTION	UNIT	QTY	4) KENNETH LAMB CONSTRUCTION CO.,LTD.		5) CROSTEX CONSTRUCTION INC.		6) BAY UTILITIES. LLC	
				UNIT COST	TOTAL COST	UNIT COST	TOTAL COST	UNIT COST	TOTAL COST
4	EXTRA DEPTH OF 4' DIAMETER STANDARD SANITARY SEWER MANHOLE, (OVER 8' DEPTH), COMPLETE IN PLACE	VF	32.7	\$310.00	\$10,137.00	\$322.00	\$10,529.40	\$250.00	\$8,175.00
5	LONG SIDE SINGLE OR DOUBLE 6" GREEN PVC PIPE SERVICE LEADS, ASTM D-2241, SDR 26, ALL DEPTHS, INCLUDING CEMENT STABILIZED SAND BACKFILL, RISER/STACK, WYE, PLUG, MARKER, MANHOLE DROPS, AND ANY NECESSARY FITTINGS, ETC., COMPLETE IN PLACE	LF	705	\$57.00	\$40,185.00	\$67.25	\$47,411.25	\$65.00	\$45,825.00
6	SHORT SIDE SINGLE OR DOUBLE 6" GREEN PVC PIPE SERVICE LEADS, ASTM D-2241, SDR 26, ALL DEPTHS, INCLUDING CEMENT STABILIZED SAND BACKFILL, RISER/STACK, WYE, PLUG, MARKER, MANHOLE DROPS, AND ANY NECESSARY FITTINGS, ETC., COMPLETE IN PLACE	EA	29	\$2,055.00	\$59,595.00	\$2,580.00	\$74,820.00	\$2,000.00	\$58,000.00
7	ADDITIONAL COST FOR SANITARY SEWER BEDDING & BACKFILL FOR UNSATISFACTORY SOIL CONDITIONS (TO BE USED ONLY AT THE WRITTEN DIRECTION OF THE ENGINEER), COMPLETE IN PLACE	LF	100	\$15.00	\$1,500.00	\$15.00	\$1,500.00	\$15.00	\$1,500.00
8	DEWATERING (TO BE USED ONLY AT THE WRITTEN DIRECTION OF THE ENGINEER), COMPLETE IN PLACE	LF	500	\$20.00	\$10,000.00	\$20.00	\$10,000.00	\$25.00	\$12,500.00
9	UTILITY SPOIL TO BE HAULED, SPREAD, AND COMPACTED TO 95% STANDARD PROCTOR DENSITY (WITHIN PROJECT LIMITS), COMPLETE IN PLACE	CY	1418	\$4.00	\$5,672.00	\$1.50	\$2,127.00	\$4.00	\$5,672.00
10	CORE INTO EXISTING SANITARY MANHOLE AND CONNECT PROPOSED 8" SANITARY SEWER LINE, INCLUDES INTERNAL SANITARY SEWER MANHOLE DROP STRUCTURE, MANHOLE VENT, AND PERMANENT PLUG OF EXISTING STUB, ALL DEPTHS, COMPLETE IN PLACE	EA	1	\$4,360.00	\$4,360.00	\$2,200.00	\$2,200.00	\$4,000.00	\$4,000.00
<b>SANITARY SEWER ITEMS - SECTION 15 SUBTOTAL:</b>						<b>\$318,811.00</b>		<b>\$336,031.40</b>	<b>\$386,321.00</b>
<b>DRAINAGE FACILITIES ITEMS - SECTION 15</b>									
1	24" RCP STORM SEWER, C-76, CLASS III, ALL CUTS, TO INCLUDE BEDDING AND BACKFILL AND CEMENT STABILIZED SAND BACKFILL UNDER AND WITHIN 1' OF PAVING, COMPLETE IN PLACE	LF	707	\$72.00	\$50,904.00	\$75.50	\$53,378.50	\$74.00	\$52,318.00
2	30" RCP STORM SEWER, C-76, CLASS III, ALL CUTS, TO INCLUDE BEDDING AND BACKFILL AND CEMENT STABILIZED SAND BACKFILL UNDER AND WITHIN 1' OF PAVING, COMPLETE IN PLACE	LF	484	\$91.00	\$44,044.00	\$94.75	\$45,859.00	\$94.00	\$45,496.00
3	36" RCP STORM SEWER, C-76, CLASS III, ALL CUTS, TO INCLUDE BEDDING AND BACKFILL AND CEMENT STABILIZED SAND BACKFILL UNDER AND WITHIN 1' OF PAVING, COMPLETE IN PLACE	LF	560	\$126.00	\$70,560.00	\$129.75	\$72,660.00	\$131.00	\$73,360.00
4	42" RCP STORM SEWER, C-76, CLASS III, ALL CUTS, TO INCLUDE BEDDING AND BACKFILL AND CEMENT STABILIZED SAND BACKFILL UNDER AND WITHIN 1' OF PAVING, COMPLETE IN PLACE	LF	260	\$166.00	\$43,160.00	\$170.50	\$44,330.00	\$169.00	\$43,940.00
5	TRENCH SAFETY SYSTEM, COMPLETE IN PLACE	LF	2011	\$1.00	\$2,011.00	\$0.05	\$100.55	\$0.10	\$201.10
6	TYPE "C" ROUND MANHOLE, 42" AND SMALLER PER CITY OF MAGNOLIA DETAIL, ALL DEPTHS, COMPLETE IN PLACE	EA	13	\$3,000.00	\$39,000.00	\$3,200.00	\$41,600.00	\$4,300.00	\$55,900.00
7	TYPE "C" ROUND MANHOLE, 48" AND LARGER PER CITY OF MAGNOLIA DETAIL, ALL DEPTHS, COMPLETE IN PLACE	EA	1	\$3,865.00	\$3,865.00	\$5,600.00	\$5,600.00	\$8,000.00	\$8,000.00
8	TYPE "C" ROUND MANHOLE WITH TYPE "A" INLET TOP, 42" AND SMALLER PER CITY OF MAGNOLIA DETAIL, ALL DEPTHS, COMPLETE IN PLACE	EA	2	\$3,900.00	\$7,800.00	\$5,600.00	\$11,200.00	\$4,700.00	\$9,400.00
9	STAGE I - REINFORCED CONCRETE TYPE "C" INLET, 5' OPENING, ALL DEPTHS, INCLUDES TEMPORARY INLET PROTECTION BARRIER FOR STAGE I INLETS, COMPLETE IN PLACE	EA	6	\$1,500.00	\$9,000.00	\$2,000.00	\$12,000.00	\$2,300.00	\$13,800.00

**BID TABULATION FOR:**

CONSTRUCTION OF THE WATER, SANITARY SEWER AND DRAINAGE FACILITIES  
 TO SERVE MAGNOLIA RIDGE FOREST SECTION 15 AND SECTION 16  
 MONTGOMERY COUNTY MUNICIPAL UTILITY DISTRICT NO. 108  
 CITY OF MAGNOLIA, MONTGOMERY COUNTY, TEXAS  
 DECEMBER 8, 2021  
 LJA ENGINEERING, INC.  
 D. FORREST  
 DECEMBER 9, 2021  
 2025-1415D (9.2)

**BID OPENING DATE:**  
**BID OPENING LOCATION:**  
**TABULATION BY:**  
**TABULATION DATE:**  
**LJA JOB NO.**

ITEM	DESCRIPTION	UNIT	QTY	4) KENNETH LAMB CONSTRUCTION CO.,LTD.		5) CROSTEX CONSTRUCTION INC.		6) BAY UTILITIES. LLC	
				UNIT COST	TOTAL COST	UNIT COST	TOTAL COST	UNIT COST	TOTAL COST
10	STAGE II – REINFORCED CONCRETE TYPE “C” INLET, 5’ OPENING, COMPLETE IN PLACE	EA	6	\$2,350.00	\$14,100.00	\$750.00	\$4,500.00	\$1,000.00	\$6,000.00
11	STAGE I – REINFORCED CONCRETE TYPE “C” INLET, 10’ OPENING, ALL DEPTHS, INCLUDES TEMPORARY INLET PROTECTION BARRIER FOR STAGE I INLETS, COMPLETE IN PLACE	EA	7	\$1,500.00	\$10,500.00	\$2,500.00	\$17,500.00	\$3,200.00	\$22,400.00
12	STAGE II – REINFORCED CONCRETE TYPE “C” INLET, 10’ OPENING, COMPLETE IN PLACE	EA	7	\$3,335.00	\$23,345.00	\$1,500.00	\$10,500.00	\$1,000.00	\$7,000.00
13	OVERFLOW DRAINAGE SWALE, 4:1 SIDE SLOPES, 2’ BOTTOM WIDTH, INCLUDES EXCAVATION, HAULING AND GRADING, COMPLETE IN PLACE	LF	260	\$15.00	\$3,900.00	\$10.00	\$2,600.00	\$10.00	\$2,600.00
14	UTILITY SPOIL TO BE HAULED, SPREAD, AND COMPACTED TO 95% STANDARD PROCTOR DENSITY (WITHIN PROJECT LIMITS), COMPLETE IN PLACE	CY	2285	\$4.00	\$9,140.00	\$1.50	\$3,427.50	\$4.00	\$9,140.00
15	DEWATERING, (TO BE USED ONLY AT THE WRITTEN DIRECTION OF THE ENGINEER), COMPLETE IN PLACE	LF	100	\$20.00	\$2,000.00	\$20.00	\$2,000.00	\$25.00	\$2,500.00
16	CURLEX EROSION CONTROL BLANKET (OR APPROVED EQUAL) OVER THE OVERFLOW SWALE, COMPLETE IN PLACE	SY	557	\$2.00	\$1,114.00	\$2.00	\$1,114.00	\$11.00	\$6,127.00
17	OUTFALL STRUCTURE FOR 36” RCP INCLUDES 4” SLOPE PAVEMENT AND CEMENT STABILIZED SAND, COMPLETE IN PLACE	EA	2	\$12,100.00	\$24,200.00	\$15,000.00	\$30,000.00	\$5,800.00	\$11,600.00
18	OUTFALL STRUCTURE FOR 42” RCP, INCLUDES 4” SLOPE PAVEMENT AND CEMENT STABILIZED SAND, COMPLETE IN PLACE	EA	1	\$15,150.00	\$15,150.00	\$17,500.00	\$17,500.00	\$5,800.00	\$5,800.00
<b>DRAINAGE FACILITIES ITEMS - SECTION 15 SUBTOTAL:</b>					<b>\$373,793.00</b>	<b>\$375,869.55</b>	<b>\$375,869.55</b>	<b>\$375,869.55</b>	<b>\$375,869.55</b>
<b>WATER ITEMS - SECTION 16</b>									
1	FULL CONSTRUCTION STAKING FOR SECTION 16 ITEMS, COORDINATE WITH GBI PARTNERS, L.P., JON BORDOVSKY, 281.499.4539, COMPLETE IN PLACE	LS	1	\$9,126.00	\$9,126.00	\$11,000.00	\$11,000.00	\$9,126.00	\$9,126.00
2	4” PVC WATER PIPE, C-900, DR 18, CL 235 ALL DEPTHS TO INCLUDE FITTINGS, BEDDING AND BACKFILL, COMPLETE IN PLACE	LF	167	\$22.00	\$3,674.00	\$24.25	\$4,049.75	\$19.00	\$3,173.00
3	4” PVC WATER PIPE, C-900, DR 18, CL 235, RESTRAINED JOINT WATER LINE, ALL DEPTHS, TO INCLUDE FITTINGS, BEDDING AND BACKFILL, COMPLETE IN PLACE	LF	35	\$33.00	\$1,155.00	\$19.75	\$691.25	\$20.00	\$700.00
4	6” PVC WATER PIPE, C-900, DR 18, CL 235 ALL DEPTHS TO INCLUDE FITTINGS, BEDDING AND BACKFILL, COMPLETE IN PLACE	LF	112	\$29.00	\$3,248.00	\$28.25	\$3,164.00	\$25.00	\$2,800.00
5	8” PVC WATER PIPE, C-900, DR 18, CL 235 RESTRAINED JOINT WATER LINE, ALL DEPTHS, TO INCLUDE FITTINGS, BEDDING AND BACKFILL, COMPLETE IN PLACE	LF	556	\$52.00	\$28,912.00	\$46.25	\$25,715.00	\$38.00	\$21,128.00
6	8” PVC WATER PIPE, C-900, DR 18, CL 235, ALL DEPTHS, TO INCLUDE FITTINGS, BEDDING AND BACKFILL, COMPLETE IN PLACE	LF	1311	\$47.00	\$61,617.00	\$40.25	\$52,767.75	\$43.00	\$56,373.00
7	FIRE HYDRANT UNIT, ALL DEPTHS, TO INCLUDE APPROPRIATE TEE, 6” GATE VALVE & BOX, 6” LEAD AND FIRE HYDRANT, BEDDING AND BACKFILL, COMPLETE IN PLACE	EA	4	\$5,064.00	\$20,256.00	\$5,100.00	\$20,400.00	\$4,900.00	\$19,600.00
8	4” PLUG AND CLAMP, COMPLETE IN PLACE	EA	1	\$341.00	\$341.00	\$150.00	\$150.00	\$200.00	\$200.00
9	8” AWWA GATE VALVE & BOX AND ADJUSTMENTS AS NECESSARY, COMPLETE IN PLACE	EA	4	\$1,458.00	\$5,832.00	\$1,675.00	\$6,700.00	\$1,500.00	\$6,000.00
10	2” BLOW-OFF VALVE AND BOX, COMPLETE IN PLACE	EA	1	\$950.00	\$950.00	\$890.00	\$890.00	\$500.00	\$500.00

**BID TABULATION FOR:**

CONSTRUCTION OF THE WATER, SANITARY SEWER AND DRAINAGE FACILITIES  
 TO SERVE MAGNOLIA RIDGE FOREST SECTION 15 AND SECTION 16  
 MONTGOMERY COUNTY MUNICIPAL UTILITY DISTRICT NO. 108  
 CITY OF MAGNOLIA, MONTGOMERY COUNTY, TEXAS  
 DECEMBER 8, 2021  
 LJA ENGINEERING, INC.  
 D. FORREST  
 DECEMBER 9, 2021  
 2025-1415D (9.2)

**BID OPENING DATE:**  
**BID OPENING LOCATION:**  
**TABULATION BY:**  
**TABULATION DATE:**  
**LJA JOB NO.**

ITEM	DESCRIPTION	UNIT	QTY	4) KENNETH LAMB CONSTRUCTION CO.,LTD.		5) CROSTEX CONSTRUCTION INC.		6) BAY UTILITIES. LLC	
				UNIT COST	TOTAL COST	UNIT COST	TOTAL COST	UNIT COST	TOTAL COST
11	ADDITIONAL CAST IRON FITTINGS, (TO BE USED ONLY AT THE WRITTEN DIRECTION OF THE ENGINEER), COMPLETE IN PLACE	TON	1	\$1,500.00	\$1,500.00	\$2,500.00	\$2,500.00	\$1,000.00	\$1,000.00
12	UTILITY SPOIL TO BE HAULED, SPREAD AND COMPACTED TO 95% STANDARD PROCTOR DENSITY (WITHIN PROJECT LIMITS), COMPLETE IN PLACE	CY	660	\$4.00	\$2,640.00	\$1.50	\$990.00	\$4.00	\$2,640.00
13	TRENCH SAFETY SYSTEM, ALL DEPTHS, COMPLETE IN PLACE	LF	2852	\$1.00	\$2,852.00	\$0.05	\$142.60	\$0.10	\$285.20
14	SHORT SIDE SINGLE OR DOUBLE SERVICE, 1" (CTS POLYETHYLENE, SDR-9) WATER SERVICE, CURB STOP, MARKER AND ALL NECESSARY CONNECTORS, PLUGS AND TAPS, COMPLETE IN PLACE	EA	12	\$844.00	\$10,128.00	\$650.00	\$7,800.00	\$900.00	\$10,800.00
15	LONG SIDE SINGLE OR DOUBLE SERVICE, 1" (CTS POLYETHYLENE, SDR-9) WATER SERVICE, CURB STOP, MARKER AND ALL NECESSARY CONNECTORS, PLUGS AND TAPS, COMPLETE IN PLACE	EA	17	\$1,538.00	\$26,146.00	\$1,375.00	\$23,375.00	\$1,400.00	\$23,800.00
16	METER BOX (DFW PLASTICS, INC., MODEL NO. DFW 1300.12.IT), OR APPROVED EQUAL, COMPLETE IN PLACE	EA	53	\$148.00	\$7,844.00	\$30.00	\$1,590.00	\$72.00	\$3,816.00
17	TRENCHLESS CONSTRUCTION OF 8" WATERLINE CASING, ALL DEPTHS, TO INCLUDE FITTINGS, BORE PITS, BEDDING AND BACKFILL OF BORE PITS, SPACERS AND END SEALS, DEWATERING, AND TRENCH SAFETY FOR BORE PIT, COMPLETE IN PLACE	LF	175	\$42.00	\$7,350.00	\$75.00	\$13,125.00	\$90.00	\$15,750.00
18	14" HDPE CASING FOR 8" WATER LINE, INCLUDING SPACERS AND END SEALS, ALL APPUTENANCES, ALL DEPTHS, COMPLETE IN PLACE	LF	175	\$87.00	\$15,225.00	\$90.00	\$15,750.00	\$38.00	\$6,650.00
19	12" X 8" TAPPING SLEEVE AND VALVE & BOX, COMPLETE IN PLACE	EA	1	\$5,790.00	\$5,790.00	\$6,500.00	\$6,500.00	\$8,000.00	\$8,000.00
<b>WATER ITEMS - SECTION 16 SUBTOTAL:</b>					<b>\$214,586.00</b>	<b>\$197,300.35</b>	<b>\$192,341.20</b>		
<b>SANITARY SEWER ITEMS - SECTION 16</b>									
1	8" PVC SEWER PIPE, ASTM D-2241, SDR 26, 0'-12' CUT, TO INCLUDE BEDDING AND BACKFILL, COMPLETE IN PLACE	LF	408	\$42.00	\$17,136.00	\$43.75	\$17,850.00	\$45.00	\$18,360.00
2	8" PVC SEWER PIPE, ASTM D-2241, SDR 26, 12'-16' CUT, TO INCLUDE BEDDING AND BACKFILL, COMPLETE IN PLACE	LF	1167	\$52.00	\$60,684.00	\$49.00	\$57,183.00	\$50.00	\$58,350.00
3	TRENCH SAFETY SYSTEM, COMPLETE IN PLACE	LF	2483	\$1.00	\$2,483.00	\$0.10	\$248.30	\$0.50	\$1,241.50
4	STANDARD 4' DIAMETER SANITARY SEWER MANHOLE, (0' - 8' DEPTH), INCLUDES PLASTIC INFLOW PROTECTORS, PROTECTIVE INTERIOR COATING (XYPEX ADMIX C-1000R, OR APPROVED EQUAL) AND ADJUSTMENTS, COMPLETE IN PLACE	EA	9	\$3,445.00	\$31,005.00	\$3,220.00	\$28,980.00	\$3,700.00	\$33,300.00
5	STANDARD 5' DIAMETER SANITARY SEWER MANHOLE, (0' - 10' DEPTH), INCLUDES PLASTIC INFLOW PROTECTORS, PROTECTIVE INTERIOR COATING (XYPEX ADMIX C-1000R, OR APPROVED EQUAL) AND ADJUSTMENTS, COMPLETE IN PLACE	EA	3	\$5,475.00	\$16,425.00	\$5,770.00	\$17,310.00	\$6,200.00	\$18,600.00
6	EXTRA DEPTH OF 4' DIAMETER STANDARD SANITARY SEWER MANHOLE, (OVER 8' DEPTH), COMPLETE IN PLACE	VF	12.58	\$310.00	\$3,899.80	\$322.00	\$4,050.76	\$250.00	\$3,145.00
7	EXTRA DEPTH OF 5' DIAMETER STANDARD SANITARY SEWER MANHOLE, (OVER 10' DEPTH), COMPLETE IN PLACE	VF	10.47	\$425.00	\$4,449.75	\$577.00	\$6,041.19	\$560.00	\$5,863.20
8	LONG SIDE SINGLE OR DOUBLE 6" GREEN PVC PIPE SERVICE LEADS, ASTM D-2241, SDR 26, ALL DEPTHS, INCLUDING CEMENT STABILIZED SAND BACKFILL, RISER/STACK, WYE, PLUG, MARKER, MANHOLE DROPS, AND ANY NECESSARY FITTINGS, ETC., COMPLETE IN PLACE	LF	672	\$56.00	\$37,632.00	\$64.50	\$43,344.00	\$60.00	\$40,320.00

**BID TABULATION FOR:**

CONSTRUCTION OF THE WATER, SANITARY SEWER AND DRAINAGE FACILITIES  
 TO SERVE MAGNOLIA RIDGE FOREST SECTION 15 AND SECTION 16  
 MONTGOMERY COUNTY MUNICIPAL UTILITY DISTRICT NO. 108  
 CITY OF MAGNOLIA, MONTGOMERY COUNTY, TEXAS  
 DECEMBER 8, 2021  
 LJA ENGINEERING, INC.  
 D. FORREST  
 DECEMBER 9, 2021  
 2025-1415D (9.2)

**BID OPENING DATE:**  
**BID OPENING LOCATION:**  
**TABULATION BY:**  
**TABULATION DATE:**  
**LJA JOB NO.**

ITEM	DESCRIPTION	UNIT	QTY	4) KENNETH LAMB CONSTRUCTION CO.,LTD.		5) CROSTEX CONSTRUCTION INC.		6) BAY UTILITIES. LLC	
				UNIT COST	TOTAL COST	UNIT COST	TOTAL COST	UNIT COST	TOTAL COST
9	SHORT SIDE SINGLE OR DOUBLE 6" GREEN PVC PIPE SERVICE LEADS, ASTM D-2241, SDR 26, ALL DEPTHS, INCLUDING CEMENT STABILIZED SAND BACKFILL, RISER/STACK, WYE, PLUG, MARKER, MANHOLE DROPS, AND ANY NECESSARY FITTINGS, ETC., COMPLETE IN PLACE	EA	17	\$1,947.00	\$33,099.00	\$2,560.00	\$43,520.00	\$2,000.00	\$34,000.00
10	STANDARD SANITARY SEWER STACKS, ALL DEPTHS, COMPLETE IN PLACE	EA	7	\$657.00	\$4,599.00	\$500.00	\$3,500.00	\$400.00	\$2,800.00
11	STANDARD SANITARY SEWER MANHOLE EXTERNAL DROP STRUCTURE, ALL DEPTHS, COMPLETE IN PLACE	EA	1	\$1,333.00	\$1,333.00	\$500.00	\$500.00	\$1,000.00	\$1,000.00
12	EXTRA DEPTH FOR STANDARD SANITARY SEWER MANHOLE DROP STRUCTURE (OVER 2'), COMPLETE IN PLACE	VF	2.05	\$44.00	\$90.20	\$50.00	\$102.50	\$35.00	\$71.75
13	STANDARD MANHOLE VENT FOR SEALED SANITARY SEWER (SEE STANDARD DETAIL ON SHEET 18), COMPLETE IN PLACE	EA	1	\$4,850.00	\$4,850.00	\$4,250.00	\$4,250.00	\$3,300.00	\$3,300.00
14	ADDITIONAL COST FOR SANITARY SEWER BEDDING & BACKFILL FOR UNSATISFACTORY SOIL CONDITIONS (TO BE USED ONLY AT THE WRITTEN DIRECTION OF THE ENGINEER), COMPLETE IN PLACE	LF	100	\$15.00	\$1,500.00	\$15.00	\$1,500.00	\$15.00	\$1,500.00
15	DEWATERING (TO BE USED ONLY AT THE WRITTEN DIRECTION OF THE ENGINEER), COMPLETE IN PLACE	LF	500	\$20.00	\$10,000.00	\$20.00	\$10,000.00	\$25.00	\$12,500.00
16	EXTRA CEMENT STABILIZED SAND (TO BE USED ONLY AT THE WRITTEN DIRECTION OF THE ENGINEER), COMPLETE IN PLACE	CY	20	\$50.00	\$1,000.00	\$50.00	\$1,000.00	\$50.00	\$1,000.00
17	UTILITY SPOIL TO BE HAULED, SPREAD, AND COMPACTED TO 95% STANDARD PROCTOR DENSITY (WITHIN PROJECT LIMITS), COMPLETE IN PLACE	CY	1070	\$4.00	\$4,280.00	\$1.50	\$1,605.00	\$4.00	\$4,280.00
<b>SANITARY SEWER ITEMS - SECTION 16 SUBTOTAL:</b>					<b>\$234,465.75</b>		<b>\$240,984.75</b>		<b>\$239,631.45</b>
<b>DRAINAGE FACILITIES ITEMS - SECTION 16</b>									
1	24" RCP STORM SEWER, C-76, CLASS III, ALL CUTS, TO INCLUDE BEDDING AND BACKFILL AND CEMENT STABILIZED SAND BACKFILL UNDER AND WITHIN 1' OF PAVING, COMPLETE IN PLACE	LF	591	\$70.00	\$41,370.00	\$75.50	\$44,620.50	\$80.00	\$47,280.00
2	30" RCP STORM SEWER, C-76, CLASS III, ALL CUTS, TO INCLUDE BEDDING AND BACKFILL AND CEMENT STABILIZED SAND BACKFILL UNDER AND WITHIN 1' OF PAVING, COMPLETE IN PLACE	LF	125	\$90.00	\$11,250.00	\$94.75	\$11,843.75	\$100.00	\$12,500.00
3	TRENCH SAFETY SYSTEM, ALL DEPTHS, COMPLETE IN PLACE	LF	716	\$1.00	\$716.00	\$0.05	\$35.80	\$0.10	\$71.60
4	TYPE "C" ROUND MANHOLE WITH TYPE "A" INLET TOP, 42" AND SMALLER PER CITY OF MAGNOLIA DETAIL, ALL DEPTHS, COMPLETE IN PLACE	EA	1	\$4,740.00	\$4,740.00	\$5,600.00	\$5,600.00	\$7,800.00	\$7,800.00
5	TYPE "C" ROUND MANHOLE, 42" AND SMALLER PER CITY OF MAGNOLIA DETAIL, ALL DEPTHS, COMPLETE IN PLACE	EA	4	\$3,000.00	\$12,000.00	\$3,200.00	\$12,800.00	\$4,100.00	\$16,400.00
6	STAGE I – REINFORCED CONCRETE TYPE "C" INLET, 5' OPENING, ALL DEPTHS, INCLUDES TEMPORARY INLET PROTECTION BARRIER FOR STAGE I INLETS, COMPLETE IN PLACE	EA	5	\$1,500.00	\$7,500.00	\$2,000.00	\$10,000.00	\$2,200.00	\$11,000.00
7	STAGE II – REINFORCED CONCRETE TYPE "C" INLET, 5' OPENING, COMPLETE IN PLACE	EA	5	\$2,350.00	\$11,750.00	\$750.00	\$3,750.00	\$1,000.00	\$5,000.00
8	STAGE I – REINFORCED CONCRETE TYPE "C" INLET, 10' OPENING, ALL DEPTHS, INCLUDES TEMPORARY INLET PROTECTION BARRIER FOR STAGE I INLETS, COMPLETE IN PLACE	EA	1	\$1,500.00	\$1,500.00	\$2,500.00	\$2,500.00	\$3,200.00	\$3,200.00
9	STAGE II – REINFORCED CONCRETE TYPE "C" INLET, 10' OPENING, COMPLETE IN PLACE	EA	1	\$3,335.00	\$3,335.00	\$1,500.00	\$1,500.00	\$1,000.00	\$1,000.00

**BID TABULATION FOR:**

CONSTRUCTION OF THE WATER, SANITARY SEWER AND DRAINAGE FACILITIES  
 TO SERVE MAGNOLIA RIDGE FOREST SECTION 15 AND SECTION 16  
 MONTGOMERY COUNTY MUNICIPAL UTILITY DISTRICT NO. 108  
 CITY OF MAGNOLIA, MONTGOMERY COUNTY, TEXAS  
 DECEMBER 8, 2021  
 LJA ENGINEERING, INC.  
 D. FORREST  
 DECEMBER 9, 2021  
 2025-1415D (9.2)

**BID OPENING DATE:**  
**BID OPENING LOCATION:**  
**TABULATION BY:**  
**TABULATION DATE:**  
**LJA JOB NO.**

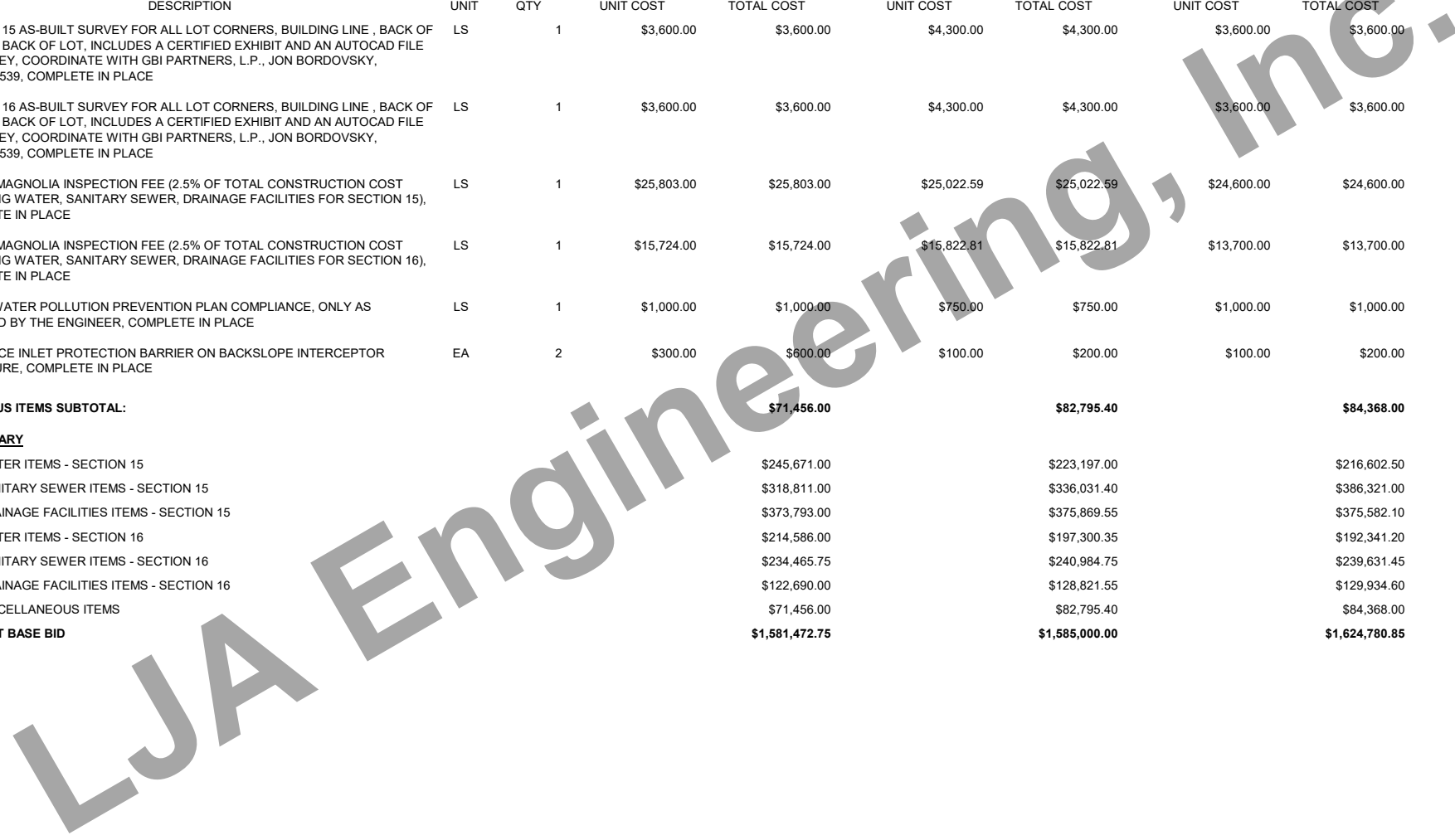
ITEM	DESCRIPTION	UNIT	QTY	4) KENNETH LAMB CONSTRUCTION CO.,LTD.		5) CROSTEX CONSTRUCTION INC.		6) BAY UTILITIES. LLC	
				UNIT COST	TOTAL COST	UNIT COST	TOTAL COST	UNIT COST	TOTAL COST
10	DEWATERING, (TO BE USED ONLY AT THE WRITTEN DIRECTION OF THE ENGINEER), COMPLETE IN PLACE	LF	350	\$20.00	\$7,000.00	\$20.00	\$7,000.00	\$25.00	\$8,750.00
11	OVERFLOW DRAINAGE SWALE, 4:1 SIDE SLOPES, 2' BOTTOM WIDTH, INCLUDES EXCAVATION, HAULING AND GRADING, COMPLETE IN PLACE	LF	30	\$15.00	\$450.00	\$10.00	\$300.00	\$16.00	\$480.00
12	UTILITY SPOIL TO BE HAULED, SPREAD, AND COMPACTED TO 95% STANDARD PROCTOR DENSITY (WITHIN PROJECT LIMITS), COMPLETE IN PLACE	CY	633	\$4.00	\$2,532.00	\$1.50	\$949.50	\$4.00	\$2,532.00
13	CURLEX EROSION CONTROL BLANKET (OR APPROVED EQUAL) OVER THE OVERFLOW SWALE, COMPLETE IN PLACE	SY	211	\$2.00	\$422.00	\$2.00	\$422.00	\$11.00	\$2,321.00
14	OUTFALL STRUCTURE FOR 24" RCP, INCLUDES 4" SLOPE PAVEMENT AND CEMENT STABILIZED SAND, COMPLETE IN PLACE	EA	1	\$8,050.00	\$8,050.00	\$13,500.00	\$13,500.00	\$5,800.00	\$5,800.00
15	OUTFALL STRUCTURE FOR 30" RCP, INCLUDES 4" SLOPE PAVEMENT AND CEMENT STABILIZED SAND, COMPLETE IN PLACE	EA	1	\$10,075.00	\$10,075.00	\$14,000.00	\$14,000.00	\$5,800.00	\$5,800.00
<b>DRAINAGE FACILITIES ITEMS - SECTION 16 SUBTOTAL:</b>					<b>\$122,690.00</b>		<b>\$128,821.55</b>		<b>\$129,934.60</b>
<b>MISCELLANEOUS ITEMS</b>									
1	STANDARD DEDUCT FOR VARIANCE REQUESTS SUBMITTED BY THE ENGINEER ON BEHALF OF THE CONTRACTOR, (TO BE USED ONLY AS DIRECTED BY THE ENGINEER), COMPLETE IN PLACE	EA	0	-\$1,000.00	\$0.00	-\$1,000.00	\$0.00	-\$1,000.00	\$0.00
2	STANDARD DEDUCT FOR STREET CLEANING (AS DIRECTED BY THE OWNER), COMPLETE IN PLACE	HR	0	-\$125.00	\$0.00	-\$125.00	\$0.00	-\$125.00	\$0.00
3	STANDARD DEDUCT FOR DAMAGE TO WETLANDS FENCING BY THE CONTRACTOR, (AS DIRECTED BY THE ENGINEER), COMPLETE IN PLACE	LF	0	-\$10.00	\$0.00	-\$10.00	\$0.00	-\$10.00	\$0.00
4	EXTRA DEWATERING FOR UTILITY LINES, ALL LINES SIZES AND DEPTHS, (TO BE USED ONLY AT THE DIRECTION OF THE ENGINEER), COMPLETE IN PLACE	LF	100	\$20.00	\$2,000.00	\$20.00	\$2,000.00	\$25.00	\$2,500.00
5	HYDROMULCH SEEDING, OVER CURLEX EROSION CONTROL BLANKET FOR OVERFLOW SWALES, COMPLETE IN PLACE	SY	568	\$3.00	\$1,704.00	\$6.00	\$3,408.00	\$11.00	\$6,248.00
6	EXTRA CEMENT STABILIZED SAND BACKFILL, (1.5 SACKS PER TON), (TO BE USED ONLY AT THE DIRECTION OF THE ENGINEER), COMPLETE IN PLACE	CY	50	\$15.00	\$750.00	\$15.00	\$750.00	\$15.00	\$750.00
7	REPAIRS TO EXISTING MAINTENANCE BERMS, CHANNEL SIDE SLOPES AND TOE, INCLUDES REGRADING AND SEEDING (DRY APPLICATION) OF DAMAGED AREAS TO EXISTING OR BETTER CONDITIONS, COMPLETE IN PLACE	SY	1500	\$5.00	\$7,500.00	\$10.00	\$15,000.00	\$8.00	\$12,000.00
8	ADDITIONAL COST FOR STORM SEWER BEDDING AND BACKFILL FOR UNSATISFACTORY SOIL CONDITIONS, ALL SIZES & DEPTHS, (TO BE USED ONLY AT THE WRITTEN DIRECTION OF THE ENGINEER), COMPLETE IN PLACE	LF	100	\$15.00	\$1,500.00	\$15.00	\$1,500.00	\$15.00	\$1,500.00
9	INSTALL AND MAINTAIN FILTER FABRIC FENCE ALONG BOUNDARY BEFORE CONSTRUCTION STARTS (AS DIRECTED BY THE ENGINEER), COMPLETE IN PLACE	LF	3600	\$1.00	\$3,600.00	\$1.00	\$3,600.00	\$2.20	\$7,920.00
10	STAGE II INLET PROTECTION BARRIER (4 SAND BAGS PER INLET) FOR PROPOSED AND EXISTING INLETS, COMPLETE IN PLACE	EA	19	\$25.00	\$475.00	\$60.00	\$1,140.00	\$50.00	\$950.00
11	STABILIZED CONSTRUCTION EXIT AT LOCATION SHOWN ON PLANS, TO INCLUDE RESTRUCTURING IF REQUIRED, AND REMOVAL, (TO BE USED AT THE WRITTEN DIRECTION OF THE ENGINEER), COMPLETE IN PLACE	EA	2	\$1,500.00	\$3,000.00	\$1.00	\$2.00	\$2,700.00	\$5,400.00
12	INSTALLATION, MAINTENANCE AND REMOVAL OF CONCRETE TRUCK WASHOUT, COMPLETE IN PLACE	EA	2	\$300.00	\$600.00	\$2,500.00	\$5,000.00	\$200.00	\$400.00

**BID TABULATION FOR:**

CONSTRUCTION OF THE WATER, SANITARY SEWER AND DRAINAGE FACILITIES  
 TO SERVE MAGNOLIA RIDGE FOREST SECTION 15 AND SECTION 16  
 MONTGOMERY COUNTY MUNICIPAL UTILITY DISTRICT NO. 108  
 CITY OF MAGNOLIA, MONTGOMERY COUNTY, TEXAS  
 DECEMBER 8, 2021  
 LJA ENGINEERING, INC.  
 D. FORREST  
 DECEMBER 9, 2021  
 2025-1415D (9.2)

**BID OPENING DATE:**  
**BID OPENING LOCATION:**  
**TABULATION BY:**  
**TABULATION DATE:**  
**LJA JOB NO.**

ITEM	DESCRIPTION	UNIT	QTY	4) KENNETH LAMB CONSTRUCTION CO.,LTD.		5) CROSTEX CONSTRUCTION INC.		6) BAY UTILITIES. LLC	
				UNIT COST	TOTAL COST	UNIT COST	TOTAL COST	UNIT COST	TOTAL COST
13	SECTION 15 AS-BUILT SURVEY FOR ALL LOT CORNERS, BUILDING LINE , BACK OF PAD AND BACK OF LOT, INCLUDES A CERTIFIED EXHIBIT AND AN AUTOCAD FILE OF SURVEY, COORDINATE WITH GBI PARTNERS, L.P., JON BORDOVSKY, 281.499.4539, COMPLETE IN PLACE	LS	1	\$3,600.00	\$3,600.00	\$4,300.00	\$4,300.00	\$3,600.00	\$3,600.00
14	SECTION 16 AS-BUILT SURVEY FOR ALL LOT CORNERS, BUILDING LINE , BACK OF PAD AND BACK OF LOT, INCLUDES A CERTIFIED EXHIBIT AND AN AUTOCAD FILE OF SURVEY, COORDINATE WITH GBI PARTNERS, L.P., JON BORDOVSKY, 281.499.4539, COMPLETE IN PLACE	LS	1	\$3,600.00	\$3,600.00	\$4,300.00	\$4,300.00	\$3,600.00	\$3,600.00
15	CITY OF MAGNOLIA INSPECTION FEE (2.5% OF TOTAL CONSTRUCTION COST INCLUDING WATER, SANITARY SEWER, DRAINAGE FACILITIES FOR SECTION 15), COMPLETE IN PLACE	LS	1	\$25,803.00	\$25,803.00	\$25,022.59	\$25,022.59	\$24,600.00	\$24,600.00
16	CITY OF MAGNOLIA INSPECTION FEE (2.5% OF TOTAL CONSTRUCTION COST INCLUDING WATER, SANITARY SEWER, DRAINAGE FACILITIES FOR SECTION 16), COMPLETE IN PLACE	LS	1	\$15,724.00	\$15,724.00	\$15,822.81	\$15,822.81	\$13,700.00	\$13,700.00
17	STORM WATER POLLUTION PREVENTION PLAN COMPLIANCE, ONLY AS DIRECTED BY THE ENGINEER, COMPLETE IN PLACE	LS	1	\$1,000.00	\$1,000.00	\$750.00	\$750.00	\$1,000.00	\$1,000.00
18	SILT FENCE INLET PROTECTION BARRIER ON BACKSLOPE INTERCEPTOR STRUCTURE, COMPLETE IN PLACE	EA	2	\$300.00	\$600.00	\$100.00	\$200.00	\$100.00	\$200.00
<b>MISCELLANEOUS ITEMS SUBTOTAL:</b>					<b>\$71,456.00</b>		<b>\$82,795.40</b>		<b>\$84,368.00</b>
<b>BIDDING SUMMARY</b>									
SUBTOTAL WATER ITEMS - SECTION 15					\$245,671.00		\$223,197.00		\$216,602.50
SUBTOTAL SANITARY SEWER ITEMS - SECTION 15					\$318,811.00		\$336,031.40		\$386,321.00
SUBTOTAL DRAINAGE FACILITIES ITEMS - SECTION 15					\$373,793.00		\$375,869.55		\$375,582.10
SUBTOTAL WATER ITEMS - SECTION 16					\$214,586.00		\$197,300.35		\$192,341.20
SUBTOTAL SANITARY SEWER ITEMS - SECTION 16					\$234,465.75		\$240,984.75		\$239,631.45
SUBTOTAL DRAINAGE FACILITIES ITEMS - SECTION 16					\$122,690.00		\$128,821.55		\$129,934.60
SUBTOTAL MISCELLANEOUS ITEMS					\$71,456.00		\$82,795.40		\$84,368.00
<b>TOTAL AMOUNT BASE BID</b>					<b>\$1,581,472.75</b>		<b>\$1,585,000.00</b>		<b>\$1,624,780.85</b>



**BID TABULATION FOR:**

CONSTRUCTION OF THE WATER, SANITARY SEWER AND DRAINAGE FACILITIES  
 TO SERVE MAGNOLIA RIDGE FOREST SECTION 15 AND SECTION 16  
 MONTGOMERY COUNTY MUNICIPAL UTILITY DISTRICT NO. 108  
 CITY OF MAGNOLIA, MONTGOMERY COUNTY, TEXAS  
 DECEMBER 8, 2021  
 LJA ENGINEERING, INC.  
 D. FORREST  
 DECEMBER 9, 2021  
 2025-1415D (9.2)

**BID OPENING DATE:**  
**BID OPENING LOCATION:**  
**TABULATION BY:**  
**TABULATION DATE:**  
**LJA JOB NO.**

7) R CONSTRUCTION CIVIL

ITEM	DESCRIPTION	UNIT	QTY	UNIT COST	TOTAL COST
<b>WATER ITEMS - SECTION 15</b>					
1	FULL CONSTRUCTION STAKING FOR SECTION 15 ITEMS, COORDINATE WITH GBI PARTNERS, L.P., JON BORDOVSKY, 281.499.4539, COMPLETE IN PLACE	LS	1	\$11,846.00	\$11,846.00
2	6" PVC WATER PIPE, C-900, DR 18, CL 235 ALL DEPTHS, TO INCLUDE FITTINGS, BEDDING AND BACKFILL, COMPLETE IN PLACE	LF	688	\$28.00	\$19,264.00
3	8" PVC WATER PIPE, C-900, DR 18, CL 235 ALL DEPTHS, TO INCLUDE FITTINGS, BEDDING AND BACKFILL, COMPLETE IN PLACE	LF	1885	\$39.00	\$73,515.00
4	8" PVC WATER PIPE, C-900, DR 18, CL 235 RESTRAINED JOINT WATER, ALL DEPTHS, TO INCLUDE FITTINGS, BEDDING AND BACKFILL, COMPLETE IN PLACE	LF	183	\$61.00	\$11,163.00
5	FIRE HYDRANT UNIT, ALL DEPTHS, TO INCLUDE APPROPRIATE TEE, 6" GATE VALVE & BOX, 6" LEAD AND FIRE HYDRANT, BEDDING AND BACKFILL, COMPLETE IN PLACE	EA	7	\$5,100.00	\$35,700.00
6	6" AWWA GATE VALVE & BOX AND ADJUSTMENTS AS NECESSARY, COMPLETE IN PLACE	EA	2	\$1,300.00	\$2,600.00
7	8" AWWA GATE VALVE & BOX AND ADJUSTMENTS AS NECESSARY, COMPLETE IN PLACE	EA	6	\$1,800.00	\$10,800.00
8	6" PLUG AND CLAMP, COMPLETE IN PLACE	EA	1	\$200.00	\$200.00
9	REMOVE AND DISPOSE OF 8" PLUG AND CLAMP AND BLOW-OFF VALVE AND CONNECT PROPOSED 8" WATER LINE, COMPLETE IN PLACE	EA	1	\$400.00	\$400.00
10	2" BLOW-OFF VALVE AND BOX, COMPLETE IN PLACE	EA	1	\$1,000.00	\$1,000.00
11	ADDITIONAL CAST IRON FITTINGS, (TO BE USED ONLY AT THE WRITTEN DIRECTION OF THE ENGINEER), COMPLETE IN PLACE	TON	0.7	\$500.00	\$350.00
12	UTILITY SPOIL TO BE HAULED, SPREAD AND COMPACTED TO 95% STANDARD PROCTOR DENSITY (WITHIN PROJECT LIMITS), COMPLETE IN PLACE	CY	796	\$4.50	\$3,582.00
13	TRENCH SAFETY SYSTEM, ALL DEPTHS, COMPLETE IN PLACE	LF	4945	\$0.10	\$494.50
14	SHORT SIDE SINGLE OR DOUBLE SERVICE, 1" (CTS POLYETHYLENE, SDR-9) WATER SERVICE, CURB STOP, MARKER AND ALL NECESSARY CONNECTORS, PLUGS AND TAPS, COMPLETE IN PLACE	EA	14	\$500.00	\$7,000.00
15	LONG SIDE SINGLE OR DOUBLE SERVICE, 1" (CTS POLYETHYLENE, SDR-9) WATER SERVICE, CURB STOP, MARKER AND ALL NECESSARY CONNECTORS, PLUGS AND TAPS, COMPLETE IN PLACE	EA	30	\$1,100.00	\$33,000.00
16	METER BOX (DFW PLASTICS, INC., MODEL NO. DFW 1300.12.IT), OR APPROVED EQUAL, COMPLETE IN PLACE	EA	78	\$30.00	\$2,340.00
<b>WATER ITEMS - SECTION 15 SUBTOTAL:</b>					<b>\$213,254.50</b>
<b>SANITARY SEWER ITEMS - SECTION 15</b>					
1	8" PVC SEWER PIPE, ASTM D-2241, SDR 26, 0'-12' CUT, TO INCLUDE BEDDING AND BACKFILL, COMPLETE IN PLACE	LF	2877	\$48.00	\$138,096.00
2	TRENCH SAFETY SYSTEM, ALL DEPTHS, COMPLETE IN PLACE	LF	3950	\$0.10	\$395.00
3	STANDARD 4' DIAMETER SANITARY SEWER MANHOLE, (0' - 8' DEPTH), INCLUDES PLASTIC INFLOW PROTECTORS, PROTECTIVE INTERIOR COATING (XYPEX ADMIX C-1000R, OR APPROVED EQUAL) AND ADJUSTMENTS, COMPLETE IN PLACE	EA	19	\$3,900.00	\$74,100.00



**BID TABULATION FOR:**

CONSTRUCTION OF THE WATER, SANITARY SEWER AND DRAINAGE FACILITIES  
 TO SERVE MAGNOLIA RIDGE FOREST SECTION 15 AND SECTION 16  
 MONTGOMERY COUNTY MUNICIPAL UTILITY DISTRICT NO. 108  
 CITY OF MAGNOLIA, MONTGOMERY COUNTY, TEXAS  
 DECEMBER 8, 2021  
 LJA ENGINEERING, INC.  
 D. FORREST  
 DECEMBER 9, 2021  
 2025-1415D (9.2)

**BID OPENING DATE:**  
**BID OPENING LOCATION:**  
**TABULATION BY:**  
**TABULATION DATE:**  
**LJA JOB NO.**

7) R CONSTRUCTION CIVIL

ITEM	DESCRIPTION	UNIT	QTY	UNIT COST	TOTAL COST
4	EXTRA DEPTH OF 4' DIAMETER STANDARD SANITARY SEWER MANHOLE, (OVER 8' DEPTH), COMPLETE IN PLACE	VF	32.7	\$200.00	\$6,540.00
5	LONG SIDE SINGLE OR DOUBLE 6" GREEN PVC PIPE SERVICE LEADS, ASTM D-2241, SDR 26, ALL DEPTHS, INCLUDING CEMENT STABILIZED SAND BACKFILL, RISER/STACK, WYE, PLUG, MARKER, MANHOLE DROPS, AND ANY NECESSARY FITTINGS, ETC., COMPLETE IN PLACE	LF	705	\$69.00	\$48,645.00
6	SHORT SIDE SINGLE OR DOUBLE 6" GREEN PVC PIPE SERVICE LEADS, ASTM D-2241, SDR 26, ALL DEPTHS, INCLUDING CEMENT STABILIZED SAND BACKFILL, RISER/STACK, WYE, PLUG, MARKER, MANHOLE DROPS, AND ANY NECESSARY FITTINGS, ETC., COMPLETE IN PLACE	EA	29	\$2,400.00	\$69,600.00
7	ADDITIONAL COST FOR SANITARY SEWER BEDDING & BACKFILL FOR UNSATISFACTORY SOIL CONDITIONS (TO BE USED ONLY AT THE WRITTEN DIRECTION OF THE ENGINEER), COMPLETE IN PLACE	LF	100	\$15.00	\$1,500.00
8	DEWATERING (TO BE USED ONLY AT THE WRITTEN DIRECTION OF THE ENGINEER), COMPLETE IN PLACE	LF	500	\$25.00	\$12,500.00
9	UTILITY SPOIL TO BE HAULED, SPREAD, AND COMPACTED TO 95% STANDARD PROCTOR DENSITY (WITHIN PROJECT LIMITS), COMPLETE IN PLACE	CY	1418	\$4.00	\$5,672.00
10	CORE INTO EXISTING SANITARY MANHOLE AND CONNECT PROPOSED 8" SANITARY SEWER LINE, INCLUDES INTERNAL SANITARY SEWER MANHOLE DROP STRUCTURE, MANHOLE VENT, AND PERMANENT PLUG OF EXISTING STUB, ALL DEPTHS, COMPLETE IN PLACE	EA	1	\$1,300.00	\$1,300.00

**SANITARY SEWER ITEMS - SECTION 15 SUBTOTAL: \$358,348.00**

**DRAINAGE FACILITIES ITEMS - SECTION 15**

1	24" RCP STORM SEWER, C-76, CLASS III, ALL CUTS, TO INCLUDE BEDDING AND BACKFILL AND CEMENT STABILIZED SAND BACKFILL UNDER AND WITHIN 1' OF PAVING, COMPLETE IN PLACE	LF	707	\$82.00	\$57,974.00
2	30" RCP STORM SEWER, C-76, CLASS III, ALL CUTS, TO INCLUDE BEDDING AND BACKFILL AND CEMENT STABILIZED SAND BACKFILL UNDER AND WITHIN 1' OF PAVING, COMPLETE IN PLACE	LF	484	\$99.00	\$47,916.00
3	36" RCP STORM SEWER, C-76, CLASS III, ALL CUTS, TO INCLUDE BEDDING AND BACKFILL AND CEMENT STABILIZED SAND BACKFILL UNDER AND WITHIN 1' OF PAVING, COMPLETE IN PLACE	LF	560	\$139.00	\$77,840.00
4	42" RCP STORM SEWER, C-76, CLASS III, ALL CUTS, TO INCLUDE BEDDING AND BACKFILL AND CEMENT STABILIZED SAND BACKFILL UNDER AND WITHIN 1' OF PAVING, COMPLETE IN PLACE	LF	260	\$183.00	\$47,580.00
5	TRENCH SAFETY SYSTEM, COMPLETE IN PLACE	LF	2011	\$0.10	\$201.10
6	TYPE "C" ROUND MANHOLE, 42" AND SMALLER PER CITY OF MAGNOLIA DETAIL, ALL DEPTHS, COMPLETE IN PLACE	EA	13	\$3,300.00	\$42,900.00
7	TYPE "C" ROUND MANHOLE, 48" AND LARGER PER CITY OF MAGNOLIA DETAIL, ALL DEPTHS, COMPLETE IN PLACE	EA	1	\$6,700.00	\$6,700.00
8	TYPE "C" ROUND MANHOLE WITH TYPE "A" INLET TOP, 42" AND SMALLER PER CITY OF MAGNOLIA DETAIL, ALL DEPTHS, COMPLETE IN PLACE	EA	2	\$6,300.00	\$12,600.00
9	STAGE I - REINFORCED CONCRETE TYPE "C" INLET, 5' OPENING, ALL DEPTHS, INCLUDES TEMPORARY INLET PROTECTION BARRIER FOR STAGE I INLETS, COMPLETE IN PLACE	EA	6	\$1,300.00	\$7,800.00

**BID TABULATION FOR:**

CONSTRUCTION OF THE WATER, SANITARY SEWER AND DRAINAGE FACILITIES  
 TO SERVE MAGNOLIA RIDGE FOREST SECTION 15 AND SECTION 16  
 MONTGOMERY COUNTY MUNICIPAL UTILITY DISTRICT NO. 108  
 CITY OF MAGNOLIA, MONTGOMERY COUNTY, TEXAS  
 DECEMBER 8, 2021  
 LJA ENGINEERING, INC.  
 D. FORREST  
 DECEMBER 9, 2021  
 2025-1415D (9.2)

**BID OPENING DATE:**  
**BID OPENING LOCATION:**  
**TABULATION BY:**  
**TABULATION DATE:**  
**LJA JOB NO.**

7) R CONSTRUCTION CIVIL

ITEM	DESCRIPTION	UNIT	QTY	UNIT COST	TOTAL COST
10	STAGE II – REINFORCED CONCRETE TYPE “C” INLET, 5’ OPENING, COMPLETE IN PLACE	EA	6	\$3,100.00	\$18,600.00
11	STAGE I – REINFORCED CONCRETE TYPE “C” INLET, 10’ OPENING, ALL DEPTHS, INCLUDES TEMPORARY INLET PROTECTION BARRIER FOR STAGE I INLETS, COMPLETE IN PLACE	EA	7	\$1,200.00	\$8,400.00
12	STAGE II – REINFORCED CONCRETE TYPE “C” INLET, 10’ OPENING, COMPLETE IN PLACE	EA	7	\$3,900.00	\$27,300.00
13	OVERFLOW DRAINAGE SWALE, 4:1 SIDE SLOPES, 2’ BOTTOM WIDTH, INCLUDES EXCAVATION, HAULING AND GRADING, COMPLETE IN PLACE	LF	260	\$7.00	\$1,820.00
14	UTILITY SPOIL TO BE HAULED, SPREAD, AND COMPACTED TO 95% STANDARD PROCTOR DENSITY (WITHIN PROJECT LIMITS), COMPLETE IN PLACE	CY	2285	\$3.00	\$6,855.00
15	DEWATERING, (TO BE USED ONLY AT THE WRITTEN DIRECTION OF THE ENGINEER), COMPLETE IN PLACE	LF	100	\$25.00	\$2,500.00
16	CURLEX EROSION CONTROL BLANKET (OR APPROVED EQUAL) OVER THE OVERFLOW SWALE, COMPLETE IN PLACE	SY	557	\$9.00	\$5,013.00
17	OUTFALL STRUCTURE FOR 36” RCP INCLUDES 4” SLOPE PAVEMENT AND CEMENT STABILIZED SAND, COMPLETE IN PLACE	EA	2	\$7,000.00	\$14,000.00
18	OUTFALL STRUCTURE FOR 42” RCP, INCLUDES 4” SLOPE PAVEMENT AND CEMENT STABILIZED SAND, COMPLETE IN PLACE	EA	1	\$8,000.00	\$8,000.00

**DRAINAGE FACILITIES ITEMS - SECTION 15 SUBTOTAL:**

**\$393,999.10**

**WATER ITEMS - SECTION 16**

1	FULL CONSTRUCTION STAKING FOR SECTION 16 ITEMS, COORDINATE WITH GBI PARTNERS, L.P., JON BORDOVSKY, 281.499.4539, COMPLETE IN PLACE	LS	1	\$9,126.00	\$9,126.00
2	4” PVC WATER PIPE, C-900, DR 18, CL 235 ALL DEPTHS TO INCLUDE FITTINGS, BEDDING AND BACKFILL, COMPLETE IN PLACE	LF	167	\$24.00	\$4,008.00
3	4” PVC WATER PIPE, C-900, DR 18, CL 235, RESTRAINED JOINT WATER LINE, ALL DEPTHS, TO INCLUDE FITTINGS, BEDDING AND BACKFILL, COMPLETE IN PLACE	LF	35	\$36.00	\$1,260.00
4	6” PVC WATER PIPE, C-900, DR 18, CL 235 ALL DEPTHS TO INCLUDE FITTINGS, BEDDING AND BACKFILL, COMPLETE IN PLACE	LF	112	\$41.00	\$4,592.00
5	8” PVC WATER PIPE, C-900, DR 18, CL 235 RESTRAINED JOINT WATER LINE, ALL DEPTHS, TO INCLUDE FITTINGS, BEDDING AND BACKFILL, COMPLETE IN PLACE	LF	556	\$50.00	\$27,800.00
6	8” PVC WATER PIPE, C-900, DR 18, CL 235, ALL DEPTHS, TO INCLUDE FITTINGS, BEDDING AND BACKFILL, COMPLETE IN PLACE	LF	1311	\$39.00	\$51,129.00
7	FIRE HYDRANT UNIT, ALL DEPTHS, TO INCLUDE APPROPRIATE TEE, 6” GATE VALVE & BOX, 6” LEAD AND FIRE HYDRANT, BEDDING AND BACKFILL, COMPLETE IN PLACE	EA	4	\$5,400.00	\$21,600.00
8	4” PLUG AND CLAMP, COMPLETE IN PLACE	EA	1	\$200.00	\$200.00
9	8” AWWA GATE VALVE & BOX AND ADJUSTMENTS AS NECESSARY, COMPLETE IN PLACE	EA	4	\$1,900.00	\$7,600.00
10	2” BLOW-OFF VALVE AND BOX, COMPLETE IN PLACE	EA	1	\$1,000.00	\$1,000.00

**BID TABULATION FOR:**

CONSTRUCTION OF THE WATER, SANITARY SEWER AND DRAINAGE FACILITIES  
 TO SERVE MAGNOLIA RIDGE FOREST SECTION 15 AND SECTION 16  
 MONTGOMERY COUNTY MUNICIPAL UTILITY DISTRICT NO. 108  
 CITY OF MAGNOLIA, MONTGOMERY COUNTY, TEXAS  
 DECEMBER 8, 2021  
 LJA ENGINEERING, INC.  
 D. FORREST  
 DECEMBER 9, 2021  
 2025-1415D (9.2)

**BID OPENING DATE:**  
**BID OPENING LOCATION:**  
**TABULATION BY:**  
**TABULATION DATE:**  
**LJA JOB NO.**

7) R CONSTRUCTION CIVIL

ITEM	DESCRIPTION	UNIT	QTY	UNIT COST	TOTAL COST
11	ADDITIONAL CAST IRON FITTINGS, (TO BE USED ONLY AT THE WRITTEN DIRECTION OF THE ENGINEER), COMPLETE IN PLACE	TON	1	\$100.00	\$100.00
12	UTILITY SPOIL TO BE HAULED, SPREAD AND COMPACTED TO 95% STANDARD PROCTOR DENSITY (WITHIN PROJECT LIMITS), COMPLETE IN PLACE	CY	660	\$4.50	\$2,970.00
13	TRENCH SAFETY SYSTEM, ALL DEPTHS, COMPLETE IN PLACE	LF	2852	\$0.10	\$285.20
14	SHORT SIDE SINGLE OR DOUBLE SERVICE, 1" (CTS POLYETHYLENE, SDR-9) WATER SERVICE, CURB STOP, MARKER AND ALL NECESSARY CONNECTORS, PLUGS AND TAPS, COMPLETE IN PLACE	EA	12	\$500.00	\$6,000.00
15	LONG SIDE SINGLE OR DOUBLE SERVICE, 1" (CTS POLYETHYLENE, SDR-9) WATER SERVICE, CURB STOP, MARKER AND ALL NECESSARY CONNECTORS, PLUGS AND TAPS, COMPLETE IN PLACE	EA	17	\$1,100.00	\$18,700.00
16	METER BOX (DFW PLASTICS, INC., MODEL NO. DFW 1300.12.IT), OR APPROVED EQUAL, COMPLETE IN PLACE	EA	53	\$35.00	\$1,855.00
17	TRENCHLESS CONSTRUCTION OF 8" WATERLINE CASING, ALL DEPTHS, TO INCLUDE FITTINGS, BORE PITS, BEDDING AND BACKFILL OF BORE PITS, SPACERS AND END SEALS, DEWATERING, AND TRENCH SAFETY FOR BORE PIT, COMPLETE IN PLACE	LF	175	\$190.00	\$33,250.00
18	14" HDPE CASING FOR 8" WATER LINE, INCLUDING SPACERS AND END SEALS, ALL APPUTENANCES, ALL DEPTHS, COMPLETE IN PLACE	LF	175	\$72.00	\$12,600.00
19	12" X 8" TAPPING SLEEVE AND VALVE & BOX, COMPLETE IN PLACE	EA	1	\$4,600.00	\$4,600.00

**WATER ITEMS - SECTION 16 SUBTOTAL: \$208,675.20**

**SANITARY SEWER ITEMS - SECTION 16**

1	8" PVC SEWER PIPE, ASTM D-2241, SDR 26, 0'-12' CUT, TO INCLUDE BEDDING AND BACKFILL, COMPLETE IN PLACE	LF	408	\$42.00	\$17,136.00
2	8" PVC SEWER PIPE, ASTM D-2241, SDR 26, 12'-16' CUT, TO INCLUDE BEDDING AND BACKFILL, COMPLETE IN PLACE	LF	1167	\$54.00	\$63,018.00
3	TRENCH SAFETY SYSTEM, COMPLETE IN PLACE	LF	2483	\$0.10	\$248.30
4	STANDARD 4' DIAMETER SANITARY SEWER MANHOLE, (0' - 8' DEPTH), INCLUDES PLASTIC INFLOW PROTECTORS, PROTECTIVE INTERIOR COATING (XYPEX ADMIX C-1000R, OR APPROVED EQUAL) AND ADJUSTMENTS, COMPLETE IN PLACE	EA	9	\$3,900.00	\$35,100.00
5	STANDARD 5' DIAMETER SANITARY SEWER MANHOLE, (0' - 10' DEPTH), INCLUDES PLASTIC INFLOW PROTECTORS, PROTECTIVE INTERIOR COATING (XYPEX ADMIX C-1000R, OR APPROVED EQUAL) AND ADJUSTMENTS, COMPLETE IN PLACE	EA	3	\$6,300.00	\$18,900.00
6	EXTRA DEPTH OF 4' DIAMETER STANDARD SANITARY SEWER MANHOLE, (OVER 8' DEPTH), COMPLETE IN PLACE	VF	12.58	\$200.00	\$2,516.00
7	EXTRA DEPTH OF 5' DIAMETER STANDARD SANITARY SEWER MANHOLE, (OVER 10' DEPTH), COMPLETE IN PLACE	VF	10.47	\$495.00	\$5,182.65
8	LONG SIDE SINGLE OR DOUBLE 6" GREEN PVC PIPE SERVICE LEADS, ASTM D-2241, SDR 26, ALL DEPTHS, INCLUDING CEMENT STABILIZED SAND BACKFILL, RISER/STACK, WYE, PLUG, MARKER, MANHOLE DROPS, AND ANY NECESSARY FITTINGS, ETC., COMPLETE IN PLACE	LF	672	\$65.00	\$43,680.00

**BID TABULATION FOR:**

CONSTRUCTION OF THE WATER, SANITARY SEWER AND DRAINAGE FACILITIES  
 TO SERVE MAGNOLIA RIDGE FOREST SECTION 15 AND SECTION 16  
 MONTGOMERY COUNTY MUNICIPAL UTILITY DISTRICT NO. 108  
 CITY OF MAGNOLIA, MONTGOMERY COUNTY, TEXAS  
 DECEMBER 8, 2021  
 LJA ENGINEERING, INC.  
 D. FORREST  
 DECEMBER 9, 2021  
 2025-1415D (9.2)

**BID OPENING DATE:**  
**BID OPENING LOCATION:**  
**TABULATION BY:**  
**TABULATION DATE:**  
**LJA JOB NO.**

7) R CONSTRUCTION CIVIL

ITEM	DESCRIPTION	UNIT	QTY	UNIT COST	TOTAL COST
9	SHORT SIDE SINGLE OR DOUBLE 6" GREEN PVC PIPE SERVICE LEADS, ASTM D-2241, SDR 26, ALL DEPTHS, INCLUDING CEMENT STABILIZED SAND BACKFILL, RISER/STACK, WYE, PLUG, MARKER, MANHOLE DROPS, AND ANY NECESSARY FITTINGS, ETC., COMPLETE IN PLACE	EA	17	\$2,500.00	\$42,500.00
10	STANDARD SANITARY SEWER STACKS, ALL DEPTHS, COMPLETE IN PLACE	EA	7	\$700.00	\$4,900.00
11	STANDARD SANITARY SEWER MANHOLE EXTERNAL DROP STRUCTURE, ALL DEPTHS, COMPLETE IN PLACE	EA	1	\$1,000.00	\$1,000.00
12	EXTRA DEPTH FOR STANDARD SANITARY SEWER MANHOLE DROP STRUCTURE (OVER 2'), COMPLETE IN PLACE	VF	2.05	\$65.00	\$133.25
13	STANDARD MANHOLE VENT FOR SEALED SANITARY SEWER (SEE STANDARD DETAIL ON SHEET 18), COMPLETE IN PLACE	EA	1	\$2,100.00	\$2,100.00
14	ADDITIONAL COST FOR SANITARY SEWER BEDDING & BACKFILL FOR UNSATISFACTORY SOIL CONDITIONS (TO BE USED ONLY AT THE WRITTEN DIRECTION OF THE ENGINEER), COMPLETE IN PLACE	LF	100	\$15.00	\$1,500.00
15	DEWATERING (TO BE USED ONLY AT THE WRITTEN DIRECTION OF THE ENGINEER), COMPLETE IN PLACE	LF	500	\$25.00	\$12,500.00
16	EXTRA CEMENT STABILIZED SAND (TO BE USED ONLY AT THE WRITTEN DIRECTION OF THE ENGINEER), COMPLETE IN PLACE	CY	20	\$50.00	\$1,000.00
17	UTILITY SPOIL TO BE HAULED, SPREAD, AND COMPACTED TO 95% STANDARD PROCTOR DENSITY (WITHIN PROJECT LIMITS), COMPLETE IN PLACE	CY	1070	\$3.40	\$3,638.00

**SANITARY SEWER ITEMS - SECTION 16 SUBTOTAL: \$255,052.20**

**DRAINAGE FACILITIES ITEMS - SECTION 16**

1	24" RCP STORM SEWER, C-76, CLASS III, ALL CUTS, TO INCLUDE BEDDING AND BACKFILL AND CEMENT STABILIZED SAND BACKFILL UNDER AND WITHIN 1' OF PAVING, COMPLETE IN PLACE	LF	591	\$84.00	\$49,644.00
2	30" RCP STORM SEWER, C-76, CLASS III, ALL CUTS, TO INCLUDE BEDDING AND BACKFILL AND CEMENT STABILIZED SAND BACKFILL UNDER AND WITHIN 1' OF PAVING, COMPLETE IN PLACE	LF	125	\$140.00	\$17,500.00
3	TRENCH SAFETY SYSTEM, ALL DEPTHS, COMPLETE IN PLACE	LF	716	\$0.10	\$71.60
4	TYPE "C" ROUND MANHOLE WITH TYPE "A" INLET TOP, 42" AND SMALLER PER CITY OF MAGNOLIA DETAIL, ALL DEPTHS, COMPLETE IN PLACE	EA	1	\$6,500.00	\$6,500.00
5	TYPE "C" ROUND MANHOLE, 42" AND SMALLER PER CITY OF MAGNOLIA DETAIL, ALL DEPTHS, COMPLETE IN PLACE	EA	4	\$3,100.00	\$12,400.00
6	STAGE I – REINFORCED CONCRETE TYPE "C" INLET, 5' OPENING, ALL DEPTHS, INCLUDES TEMPORARY INLET PROTECTION BARRIER FOR STAGE I INLETS, COMPLETE IN PLACE	EA	5	\$1,100.00	\$5,500.00
7	STAGE II – REINFORCED CONCRETE TYPE "C" INLET, 5' OPENING, COMPLETE IN PLACE	EA	5	\$3,000.00	\$15,000.00
8	STAGE I – REINFORCED CONCRETE TYPE "C" INLET, 10' OPENING, ALL DEPTHS, INCLUDES TEMPORARY INLET PROTECTION BARRIER FOR STAGE I INLETS, COMPLETE IN PLACE	EA	1	\$1,100.00	\$1,100.00
9	STAGE II – REINFORCED CONCRETE TYPE "C" INLET, 10' OPENING, COMPLETE IN PLACE	EA	1	\$5,100.00	\$5,100.00

**BID TABULATION FOR:**

CONSTRUCTION OF THE WATER, SANITARY SEWER AND DRAINAGE FACILITIES  
 TO SERVE MAGNOLIA RIDGE FOREST SECTION 15 AND SECTION 16  
 MONTGOMERY COUNTY MUNICIPAL UTILITY DISTRICT NO. 108  
 CITY OF MAGNOLIA, MONTGOMERY COUNTY, TEXAS  
 DECEMBER 8, 2021  
 LJA ENGINEERING, INC.  
 D. FORREST  
 DECEMBER 9, 2021  
 2025-1415D (9.2)

**BID OPENING DATE:**  
**BID OPENING LOCATION:**  
**TABULATION BY:**  
**TABULATION DATE:**  
**LJA JOB NO.**

7) R CONSTRUCTION CIVIL

ITEM	DESCRIPTION	UNIT	QTY	UNIT COST	TOTAL COST
10	DEWATERING, (TO BE USED ONLY AT THE WRITTEN DIRECTION OF THE ENGINEER), COMPLETE IN PLACE	LF	350	\$25.00	\$8,750.00
11	OVERFLOW DRAINAGE SWALE, 4:1 SIDE SLOPES, 2' BOTTOM WIDTH, INCLUDES EXCAVATION, HAULING AND GRADING, COMPLETE IN PLACE	LF	30	\$20.00	\$600.00
12	UTILITY SPOIL TO BE HAULED, SPREAD, AND COMPACTED TO 95% STANDARD PROCTOR DENSITY (WITHIN PROJECT LIMITS), COMPLETE IN PLACE	CY	633	\$4.50	\$2,848.50
13	CURLEX EROSION CONTROL BLANKET (OR APPROVED EQUAL) OVER THE OVERFLOW SWALE, COMPLETE IN PLACE	SY	211	\$12.00	\$2,532.00
14	OUTFALL STRUCTURE FOR 24" RCP, INCLUDES 4" SLOPE PAVEMENT AND CEMENT STABILIZED SAND, COMPLETE IN PLACE	EA	1	\$4,900.00	\$4,900.00
15	OUTFALL STRUCTURE FOR 30" RCP, INCLUDES 4" SLOPE PAVEMENT AND CEMENT STABILIZED SAND, COMPLETE IN PLACE	EA	1	\$5,800.00	\$5,800.00

**DRAINAGE FACILITIES ITEMS - SECTION 16 SUBTOTAL:**

**\$138,246.10**

**MISCELLANEOUS ITEMS**

1	STANDARD DEDUCT FOR VARIANCE REQUESTS SUBMITTED BY THE ENGINEER ON BEHALF OF THE CONTRACTOR, (TO BE USED ONLY AS DIRECTED BY THE ENGINEER), COMPLETE IN PLACE	EA	0	-\$1,000.00	\$0.00
2	STANDARD DEDUCT FOR STREET CLEANING (AS DIRECTED BY THE OWNER), COMPLETE IN PLACE	HR	0	-\$125.00	\$0.00
3	STANDARD DEDUCT FOR DAMAGE TO WETLANDS FENCING BY THE CONTRACTOR, (AS DIRECTED BY THE ENGINEER), COMPLETE IN PLACE	LF	0	-\$10.00	\$0.00
4	EXTRA DEWATERING FOR UTILITY LINES, ALL LINES SIZES AND DEPTHS, (TO BE USED ONLY AT THE DIRECTION OF THE ENGINEER), COMPLETE IN PLACE	LF	100	\$20.00	\$2,000.00
5	HYDROMULCH SEEDING, OVER CURLEX EROSION CONTROL BLANKET FOR OVERFLOW SWALES, COMPLETE IN PLACE	SY	568	\$6.00	\$3,408.00
6	EXTRA CEMENT STABILIZED SAND BACKFILL, (1.5 SACKS PER TON), (TO BE USED ONLY AT THE DIRECTION OF THE ENGINEER), COMPLETE IN PLACE	CY	50	\$15.00	\$750.00
7	REPAIRS TO EXISTING MAINTENANCE BERMS, CHANNEL SIDE SLOPES AND TOE, INCLUDES REGRADING AND SEEDING (DRY APPLICATION) OF DAMAGED AREAS TO EXISTING OR BETTER CONDITIONS, COMPLETE IN PLACE	SY	1500	\$6.00	\$9,000.00
8	ADDITIONAL COST FOR STORM SEWER BEDDING AND BACKFILL FOR UNSATISFACTORY SOIL CONDITIONS, ALL SIZES & DEPTHS, (TO BE USED ONLY AT THE WRITTEN DIRECTION OF THE ENGINEER), COMPLETE IN PLACE	LF	100	\$15.00	\$1,500.00
9	INSTALL AND MAINTAIN FILTER FABRIC FENCE ALONG BOUNDARY BEFORE CONSTRUCTION STARTS (AS DIRECTED BY THE ENGINEER), COMPLETE IN PLACE	LF	3600	\$1.00	\$3,600.00
10	STAGE II INLET PROTECTION BARRIER (4 SAND BAGS PER INLET) FOR PROPOSED AND EXISTING INLETS, COMPLETE IN PLACE	EA	19	\$75.00	\$1,425.00
11	STABILIZED CONSTRUCTION EXIT AT LOCATION SHOWN ON PLANS, TO INCLUDE RESTRUCTURING IF REQUIRED, AND REMOVAL, (TO BE USED AT THE WRITTEN DIRECTION OF THE ENGINEER), COMPLETE IN PLACE	EA	2	\$2,200.00	\$4,400.00
12	INSTALLATION, MAINTENANCE AND REMOVAL OF CONCRETE TRUCK WASHOUT, COMPLETE IN PLACE	EA	2	\$500.00	\$1,000.00

**BID TABULATION FOR:**

CONSTRUCTION OF THE WATER, SANITARY SEWER AND DRAINAGE FACILITIES  
TO SERVE MAGNOLIA RIDGE FOREST SECTION 15 AND SECTION 16  
MONTGOMERY COUNTY MUNICIPAL UTILITY DISTRICT NO. 108  
CITY OF MAGNOLIA, MONTGOMERY COUNTY, TEXAS  
DECEMBER 8, 2021  
LJA ENGINEERING, INC.  
D. FORREST  
DECEMBER 9, 2021  
2025-1415D (9.2)

**BID OPENING DATE:**  
**BID OPENING LOCATION:**  
**TABULATION BY:**  
**TABULATION DATE:**  
**LJA JOB NO.**

7) R CONSTRUCTION CIVIL

ITEM	DESCRIPTION	UNIT	QTY	UNIT COST	TOTAL COST
13	SECTION 15 AS-BUILT SURVEY FOR ALL LOT CORNERS, BUILDING LINE , BACK OF PAD AND BACK OF LOT, INCLUDES A CERTIFIED EXHIBIT AND AN AUTOCAD FILE OF SURVEY, COORDINATE WITH GBI PARTNERS, L.P., JON BORDOVSKY, 281.499.4539, COMPLETE IN PLACE	LS	1	\$3,600.00	\$3,600.00
14	SECTION 16 AS-BUILT SURVEY FOR ALL LOT CORNERS, BUILDING LINE , BACK OF PAD AND BACK OF LOT, INCLUDES A CERTIFIED EXHIBIT AND AN AUTOCAD FILE OF SURVEY, COORDINATE WITH GBI PARTNERS, L.P., JON BORDOVSKY, 281.499.4539, COMPLETE IN PLACE	LS	1	\$3,600.00	\$3,600.00
15	CITY OF MAGNOLIA INSPECTION FEE (2.5% OF TOTAL CONSTRUCTION COST INCLUDING WATER, SANITARY SEWER, DRAINAGE FACILITIES FOR SECTION 15), COMPLETE IN PLACE	LS	1	\$24,175.00	\$24,175.00
16	CITY OF MAGNOLIA INSPECTION FEE (2.5% OF TOTAL CONSTRUCTION COST INCLUDING WATER, SANITARY SEWER, DRAINAGE FACILITIES FOR SECTION 16), COMPLETE IN PLACE	LS	1	\$15,100.00	\$15,100.00
17	STORM WATER POLLUTION PREVENTION PLAN COMPLIANCE, ONLY AS DIRECTED BY THE ENGINEER, COMPLETE IN PLACE	LS	1	\$1,200.00	\$1,200.00
18	SILT FENCE INLET PROTECTION BARRIER ON BACKSLOPE INTERCEPTOR STRUCTURE, COMPLETE IN PLACE	EA	2	\$75.00	\$150.00

**MISCELLANEOUS ITEMS SUBTOTAL:**

**\$74,908.00**

**BIDDING SUMMARY**

SUBTOTAL WATER ITEMS - SECTION 15	\$213,254.50
SUBTOTAL SANITARY SEWER ITEMS - SECTION 15	\$358,348.00
SUBTOTAL DRAINAGE FACILITIES ITEMS - SECTION 15	\$393,999.10
SUBTOTAL WATER ITEMS - SECTION 16	\$208,675.20
SUBTOTAL SANITARY SEWER ITEMS - SECTION 16	\$255,052.20
SUBTOTAL DRAINAGE FACILITIES ITEMS - SECTION 16	\$138,246.10
SUBTOTAL MISCELLANEOUS ITEMS	\$74,908.00
<b>TOTAL AMOUNT BASE BID</b>	<b>\$1,642,483.10</b>

LJA Engineering, Inc.